



TAVISTOCK COLLEGE

Sixth Form Prospectus
2010-2012



Crowndale Road
Tavistock Devon PL19 8DD
Tel:01822 614231
Fax:01822 612030

Website address:www.tavistockcollege.devon.sch.uk
E-mail address: enquiries@tavistockcollege.devon.sch.uk
Mr Mathieson: pmathieson@tavistockcollege.devon.sch.uk

Principal

MR C EVES

*Director of
Sixth Form Studies*

MR P MATHIESON

*Assistant Director of
Sixth Form Studies*

MR I BARNES

CONTENTS

WELCOME LETTERS	3, 4
YOUR OPTIONS	5
OPTION 1: STAYING ON AT COLLEGE	6
OPTION 2: FURTHER EDUCATION	7
OPTION 3: TRAINING / EDUCATION	7
TAVISTOCK COLLEGE SIXTH FORM (ENTRANCE REQUIREMENTS)	8
SOME QUESTIONS ABOUT SIXTH FORM	9
ONE YEAR COURSES	12
BTEC FIRST DIPLOMAS	12
GCSE RETAKE COURSES	14
TWO YEAR COURSES	15
GCE A-LEVEL COURSES	16
BTEC NATIONAL DIPLOMA IN CHILDREN'S CARE	54
BIBLIOGRAPHY	55
THE COLLEGE LIBRARY	55
A GLOSSARY OF TERMS	56
SIXTH FORM COURSES	57

Dear Parents and Students,

Tavistock College

Tavistock College Sixth Form has earned a reputation for academic excellence. Studying for success in the Tavistock College Sixth Form will provide you with a complete educational experience that matches that of any other Devon school. As a Specialist Language College, our programme contains unique learning opportunities in the UK and abroad that will broaden and enrich your learning across all subject areas.

In the Sixth Form, you will be treated as an adult and we will expect adult standards. As one of the College's senior students, you can enjoy the privileges of sixth form life and inspire younger students to strive for excellence through learning.

- Have the chance to take on leadership and responsibility
- Show that you can care for and mentor younger students
- Demonstrate that you can organise and lead year team, sports or arts events
- Manage your own time and learning, meet deadlines, and enjoy success
- Take part in debate, contribute ideas to the development of the Sixth Form and the College
- Enjoy working and socialising with a first-class learning community of students.

You will certainly find a programme of study tailored to your needs that will be stimulating and challenging. The College's expert systems for support and guidance will be available to you. The key to success in the Sixth Form is matching the self-discipline of study with the College's personal support for learning. Last year over 120 of our former students started courses in higher education but, more significantly, our students develop as thinking, critical and reflective learners who are able to make a positive contribution to the world of work or education.

In 2009, our students achieved some outstanding AS Level and A Level results. Joining the successful and popular Sixth Form at Tavistock College will provide you with courses to match your needs.

Selecting the Tavistock College Sixth Form to take your career forward is a wise choice. The range of opportunities is superb, and the quality of teaching and learning provided for you is of the highest possible standard. I look forward to seeing you join Tavistock's learning community of Sixth Form students.

Yours sincerely,

Colin Eves

Dear Prospective Students and Parents,

We look forward to welcoming you to Tavistock College Sixth Form.

We have 400 students in the Sixth Form following a wide range of programmes. Our Year 12 students can select a one-year BTEC First Diploma course, or, for those with five or more higher GCSE grades, choose from over 35 AS Level and A Level courses that we offer. Some of these are advanced applied courses including Leisure, Business and a full-time National Diploma in Children's Care, Learning and Development. Students in Year 11 are guided in their choice from this wide range of subjects and we work closely with the careers service throughout Key Stage 4 and at post-16.

Students aiming for A Levels now choose four AS-level subjects in Year 12, and take three of these through to full A Level accreditation at the end of Year 13. A number of universities now look favourably on one of the four AS Level subjects being from a contrasting discipline to the other three. In this prospectus you will see some examples of student programmes. The main consideration is to choose a combination of courses that suits **you**, the student, and reflects your strengths and career options.

The international outlook of our College is reflected in the range of language courses on offer. In addition we attract a number of international students who study with us for periods of time between six months and two years: currently we have a number of German students on role. There are opportunities for visits and work placements abroad too.

Last year we dealt with over 120 applications to UK universities through the UCAS application procedure and the majority of our Sixth Form students successfully seek university entrance with just about every UK university being represented among the applications in any particular year. Sixth Form staff have a wide experience of advising students on the whole range of post-18 opportunities. We work closely with the Connexions personal advisers to this end.

All Sixth Formers benefit from the range of enrichment activities and are expected to contribute to the life of the College. Our students take responsibility in running sports teams within the lower school, support the work of Heads of Year or offer some time each week to assist lower school children in the classroom. Students play a full part in the extra-curricular activities including music, sport and drama. In addition there have been opportunities in recent years for involvement in the Duke of Edinburgh Award Scheme, and the Ten Tors Dartmoor Challenge, and a whole host of other activities.

The most important requirement for entry to Tavistock College Sixth Form is commitment. If you have questions about the courses we offer and whether they are appropriate for you, please get in touch with one of us.

Yours sincerely

Phil Mathieson

Ian Barnes

YOUR OPTIONS

This booklet has been designed to help you make your choice about what to do after Year 11. Look carefully at

ALL the possibilities.

- Read this booklet very carefully, together with two other booklets: 'Choices 2010 - Devon Careers' and 'It's Your Choice'.

You should have both of these already, otherwise see your Careers Co-ordinator.

- Spend time talking to College or Connexions Careers Advisers.
- Do some research in the Careers Library.

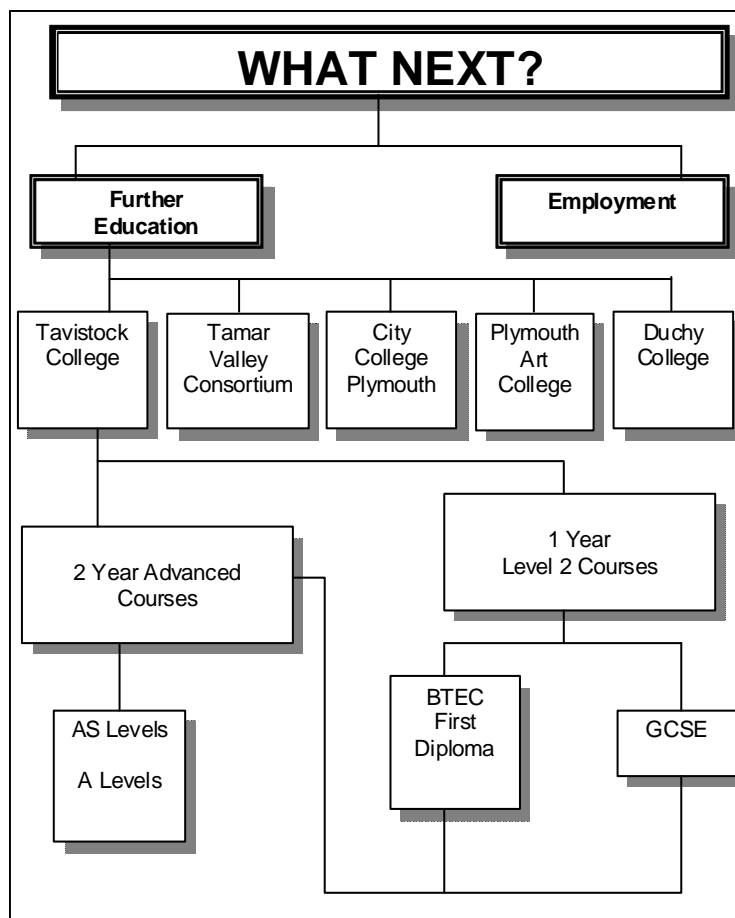
You may think you know where you are heading. What happens if you do not do as well as you had hoped in the summer examinations? What if there are no vacancies in your chosen area in September? We hope this won't happen, but it might! Make sure you have several options thought out and written down.

Above all, do not get depressed if you run into problems - use the staff here in the College and the Connexions Careers Adviser to help you find new routes.

Be sure to consider your interests, abilities and likely qualifications. It is always useful to extend your education: improving your qualifications will almost certainly improve your chances of getting the career you want.

Of course, you will help yourself most if you manage to get some good grades in GCSE.

Seriously consider continuing your education full-time after 16. If you do get a job, make sure that it will give you training opportunities, especially for NVQs (National Vocational Qualifications). You should also consider the Modern Apprenticeship route.



SO WHAT ARE YOUR OPTIONS?

THE MAIN DECISION IS:

Do I stay on in education?

At Tavistock College for one or two years

Or

At another College

Do I enter employment?

By getting a job or work placement and by making sure it has training opportunities.

OPTION 1: **STAYING ON AT COLLEGE**

The large majority of our Year 11 students choose to continue their post-16 studies here at Tavistock College Sixth Form, following 'A' Level or BTEC courses. In addition, GCSE re-sit classes are available in English Language, Mathematics and Science.

SOME ADVANTAGES OF SIXTH FORM:

- You will be with staff and students you know but in a more adult environment.
- Teaching styles will be familiar.
- You can acquire qualifications to allow entry to a job at a higher level or to enter Further or Higher Education.
- Purpose built study facilities with state of the art information technology.

How do I find out more about the Sixth Form?

1. The Post-16 Evening (21st October, 2009) for you and your parents will give some information of the courses on offer.
2. An individual interview about your Sixth Form choices (from November onwards).
3. Sessions to give you a taste of what Sixth Form courses are like during our Conference, 5th - 7th July, 2010.
4. At the start of the new term there will be interviews for new Sixth Formers. You will know your results so final decisions about your choice of course can be taken and you will be ready to start your new courses.

WHICH COURSES WILL YOU OFFER IN 2010- 2012?

There will be lots of different courses which can be combined in different ways. You will find GCE A Levels, vocational courses at Levels 2 and 3, GCSEs and other courses. We will try very hard to satisfy everyone, although sometimes we cannot run very small groups.

There are specific entrance requirements for all of our sixth form courses. These are explained in detail in this prospectus. It is important that you read and understand the entrance requirements for your chosen courses.

1) ADVANCED LEVEL COURSES (2 YEARS)

There is a wide range of courses available. You will find details of all of these courses later in this booklet.

During the first year in the Sixth Form you will choose four subjects at AS Level or their equivalents. In your second year you will normally choose three of these as A2 courses, so completing three full A Levels by the time you finish. You may also, if you wish, select a further AS course in your second year.

After two years on Advanced courses you will then have completed three full A Levels and a further one or two AS courses.

2) BTEC FIRST DIPLOMAS (1 YEAR)

BTEC First is an important national qualification for those of you who at 16 would like to spend a further year in full-time education.

It will give you the qualifications for an advanced course and opportunities for extra qualifications.

It will provide you with a vocational course.

It is an integrated course, not a collection of separate subjects and we plan to offer courses in Business and Health & Social Care in 2009.

3) GCSE

Everyone knows the value of GCSEs. We do not offer a wide range of repeats because we know from past experience that if you take the same subjects again that you took in Years 10 and 11 you will soon lose interest. However,

you can retake English, Mathematics and Science alongside other courses in the Sixth Form.

OPTION 2: **FURTHER EDUCATION**

A wide range of courses are offered at your local College of Further Education. Some courses aim to develop your skills for a job, some to introduce you to a broad area of work, others to continue your general education.

SOME ADVANTAGES OF FURTHER EDUCATION:

- A new atmosphere of study may appeal to you.
- You will meet new people and make new friends.
- A very wide range of courses, particularly vocational, are available.

Information of full-time courses available at the City College Plymouth and their entry requirements can be found in the Careers Library.

*City College Plymouth
Kings Road,
Devonport,
Plymouth PL1 5QG.
Tel: 01752 305300*

There are also courses at the College of Art for which you will need a folder of good art work.

*Plymouth College of Art and Design,
Tavistock Place,
Plymouth
PL4 8AT.
Tel: 01752 203434*

There are further courses at:

*Duchy College,
Stoke Climsland,
Callington,
Cornwall.*

Tel: 01579 372222

If you decide to attend one of these colleges remember that travelling may result in a very long day.

A wide range of vocational courses are available through the Tamar Valley Consortium. Please speak to your Connexions Advisor or visit the website at www.t-v-c.org.

OPTION 3: **TRAINING / EDUCATION**

If you want to look for a job straight away find one which offers training and the chance to study part-time. It will improve your prospects for the future.

SOME ADVANTAGES OF TRAINING / EMPLOYMENT:

- You will be paid and be independent.
- You can combine work with part-time training.
- If you have a work placement, you will be gaining knowledge and skills in a real working environment, for which you will be paid a training allowance.

If you want more help and advice about future employment ask your Tutor to arrange for you to see a Careers Adviser again, or make an appointment yourself. Careers Advisers know about jobs and about further education and training opportunities.

TAVISTOCK COLLEGE SIXTH FORM

ENTRANCE REQUIREMENTS

WHAT DO I NEED TO STAY ON?

Most important, commitment, first of all to the College and, secondly, to a course of study which will be of benefit to you. That means working hard, playing a full part in Sixth Form life and accepting the College rules.

WHAT GCSE GRADES DO I NEED?

1 Advanced Level Courses (AS Level or A Level including Applied):

A student wishing to take Advanced courses should usually have:

- i) a grade B or higher in related GCSE subjects, and
- ii) a minimum of five GCSE passes at grade C or higher including English Language or Mathematics

Students who do not attain these grades can gain access to Advanced Level courses by completing a BTEC Award at Merit or Distinction level.

Advanced Level students without grade C passes in English Language or Maths must re-take these subjects at GCSE level during their time in the sixth form.

2 BTEC National Diploma (Children's Care, Learning & Development)

A student wishing to take a BTEC National Diploma (Children's Care, Learning & Development) will need:

- i) A minimum of four GCSE passes at grade C or above or BTEC First Award at Merit or Distinction.
- ii) English Language GCSE at a minimum of grade D

3 BTEC First Awards

A student wishing to take a BTEC First course should have a minimum of 3 GCSE passes at grade E or higher.

We will discuss with you your best route.

SIXTH FORM LEARNING AGREEMENT

You will be expected to sign and adhere to the 'Sixth Form Learning Agreement'.

Simply summarised, the responsibilities are that, as a senior member of the College, you should maintain good levels of attendance and punctuality and demonstrate a commitment to your courses. You should also set a good example to others in terms of your general conduct and contribution to school life.

SOME QUESTIONS ABOUT SIXTH FORM

What else do I need to know?

SOME QUESTIONS TO ASK YOURSELF ARE:

- Do I wish to specialise or maintain the breadth of my studies?
- Which qualifications do I need for the courses on offer?
- Do I wish to pursue a course with a vocational (job-related) emphasis?
- Where will the course lead? For example, which subjects do I need to get a place at university?
- What is involved in studying a particular subject?

WHAT COURSES DO I NEED TO STUDY FOR MY CAREER CHOICE?

Some University courses and some careers will require you to have studied certain subjects. Before you choose the subjects you want to study you therefore need to look at what qualifications you need to move to the next stage. This will involve you researching carefully. you should look at the Connexions website and arrange an interview if this is necessary. you can also look at the UCAS website for the entry profile for particular courses and you can arrange to see a member of the Sixth Form team if necessary. Did you know for example

- You may need Human Biology to study a sports related course at University
- You may need Maths at 'A' level to study Computing at degree level
- You may need a Science for a career in Nursing

This is a complex area where finding out as much as possible could save you from

disappointment later. Do also remember you need to choose subjects you will enjoy and do well at. If your career preference needs you to study subjects you will not enjoy then you may need a Connexions interview to check whether you are considering the right career.

WHAT WILL THE WORKLOAD BE LIKE?

An Advanced Level course programme should not be undertaken lightly. If you are to profit fully from your course you will have to work very hard both during and outside lessons:

- 1) As a general guide, for each 'A' and 'AS' Level subject you will need to spend a least 5 hours a week OUTSIDE of class. Certain subjects give even more specific guidelines in their description on the following pages.
- 2) Do not allow your out of school commitments to affect the time you can devote to your studies.
- 3) Although socialising and earning money from a part-time job are exciting opportunities, you must not allow them to affect your long-term goal of obtaining good qualifications whilst in school.

Generally, graduates will earn over £200,000 more than those without a degree during their working lives.

Students with excessive work commitments (over 10 hours per week) do noticeably worse in exams than those without. Get the balance right and Sixth Form is an incredibly rewarding and enjoyable time!

WHAT ARE THE FACILITIES LIKE?

The purpose built Sixth Form block includes a Sixth Form social area and classrooms. A dedicated Sixth Form Study area provides computers and work space for students. The standard of accommodation is very high with a feel of greater independence reflecting the adult environment into which you are entering.

Sixth Formers have opportunities to use the very latest IT facilities, allowing access to international communication and information systems.

AM I GOOD ENOUGH?

Before deciding about advanced courses it is very important to have an adequate foundation of GCSE passes on which to build.

Study at Advanced Level is of a much more intensive academic nature than GCSE and often involves more reading and research. To undertake Advanced courses you need to have passed 5 or more GCSE subjects at Grade C or higher, with at least Grade B in GCSE subjects related to your Sixth Form courses.

The range of GCSEs is also relevant. Grades A-C in English Language and Mathematics are particularly important. Science and a Language are often very helpful. These provide the base for keeping open a range of career and course options for as long as possible.

BTEC level 2 courses require you to have 3 grade E's at GCSE including English Language.

WHAT ABOUT THESE BTEC AND APPLIED A-LEVELS?

WHAT DOES 'VOCATIONAL' MEAN?

Vocational courses are to do with a particular area of work - they prepare you for a job or to go into further or higher education. They are now called "Applied A-Levels".

WHAT ARE THEY?

Applied A Levels are nationally recognised work-related qualifications. They are graded A* to E in common with other A Levels. They generally, however, have a greater emphasis on coursework and continuous assessment than other A Levels.

Taking an Applied A Level in a particular vocational area does not limit you to that career path however; you are able to change career or study direction.

We offer Applied A Level courses in Business, Leisure & ICT. We also offer a National Diploma in Children's Care, Learning and Development.

HOW ARE EXAMINATIONS SET AND MARKED?

Increasingly, coursework is a common feature in most courses.

For Advanced courses, grades of A*, A, B, C, D, and E are awarded to those who have reached an acceptable standard.

WHERE DO I GO FROM THE SIXTH FORM?

GCE and Applied A Levels are nationally recognised qualifications allowing progress to higher education, further education or employment. Our tutorial programme in the Sixth Form includes detailed advice on the full range of opportunities at 18+.

I REALLY ENJOYED MY WORK EXPERIENCE IN YEAR 11. ARE THERE ANY OPPORTUNITIES IN THE SIXTH FORM FOR WORK EXPERIENCE?

We believe that work experience is very valuable in helping you to understand the relevance of the subjects you are studying and making you more aware of the world of work and its opportunities.

You will be encouraged to take part in some

form of work experience or work-shadowing during your Sixth Form career at a time convenient to your studies. Work experience is an integral part of the BTEC courses. You will have the opportunity to take work experience abroad and the officers of the Language College will aid in this.

WILL THERE BE OPPORTUNITIES TO TRAVEL ABROAD?

Students are encouraged to participate in courses, visits or placements abroad. The College offers a wide range of opportunities including work experience in Europe. Some courses offer fieldwork and study sessions abroad.

WHAT HELP AND GUIDANCE WILL I RECEIVE?

In the Sixth Form your Personal Tutor will provide the focal point for monitoring your progress and giving you the support you need to make a success of your Sixth Form career. The Year Heads and Tutors provide specialist counselling and guidance. Naturally, your subject teachers play a very important part in guiding you through your course, and in setting and negotiating targets with you.

Tutors work closely with careers advisers from Connexions who can give individual and group advice.

WHAT OTHER OPPORTUNITIES ARE THERE FOR SIXTH FORMERS?

This prospectus concentrates on the courses we offer in Tavistock College Sixth Form which lead to examinations and academic or vocational qualifications. Don't forget that as a Sixth Form student you will have access to the full range of extra curricular activities in the school.

In the past two years we have had Sixth Formers taking part in Young Enterprise, Duke of Edinburgh Award, Ten Tors, National Mock Bar Trial, Exchange visits and trips to the Czech Republic, Paris, London, Japan and Uganda. Many students perform in the

school choirs, bands, orchestras and are involved in drama productions. A full range of sports is available including school teams which play competitively.

In addition, we encourage our Sixth Form students to get involved in support work in Years 7 to 11. There are peer mentors, year teams, sports captains and students who give classroom support in special needs. Not only does this benefit the College community but it also is a valuable way for students to develop their personal skills and gain useful experience.

WHAT FINANCIAL HELP IS AVAILABLE

Education Maintenance Allowance (EMA) is available to students whose household income is below £30,000. Application forms will be available from school later in the year. There are two main features of EMA:

- Weekly payment bands of £30, £20 or £10 depending on household income.
- Bonus payments of £100, worth up to £500 in total over 2 years.

EMA payments depend on attendance and are made directly into the student's own bank account.

Application packs will be available from the Year 11 team and Student Services office in late spring or early summer.

Other Financial Help:

Limited additional financial support may be available for students whose families are facing severe financial hardship:

Tavistock College Endowment Fund
Devon County Council Learner Support Fund

These discretionary funds may make small payments to support a student's education (e.g. pay for text books). More information is available from the Sixth Form Office.

ONE YEAR COURSES - BTEC

BTEC FIRST DIPLOMAS

The College will offer one year Sixth Form courses which will lead to a BTEC First Diploma.

The qualification is valued in its own right, but can also be used as a stepping stone to an Advanced Course, which can in turn lead to Higher Education. It is equivalent to 4 GCSE passes at grades A*- C.

Students must achieve a Merit or Distinction grade in their BTEC Award AND will also need one additional GCSE at Grade C or above if they wish to progress onto 'A' Level courses after completion of their BTEC Award

Completion of the course will equip students with a range of 'Functional Skills' - Communication, Numeracy and Information Technology; these skills are particularly valued by employers and universities.

All students registering for a BTEC First (excluding Business) will be expected to participate in a work experience programme as part of the course.

BTEC FIRST DIPLOMA IN BUSINESS

Awarding Body: Edexcel

TO TAKE THIS COURSE:

You will need at least 3 GCSE passes at grade E or above, including grade E or higher in English. Along with this course you would take the Key Skills course and you would have the option of 1 or 2 GCSE retake courses in Maths, English or Science.

THIS COURSE WILL APPEAL TO THOSE OF YOU WHO:

- have an interest in business and how it is operated
- enjoy studying a subject that is relevant to your own lives and experience
- want to find out more about business through personal investigation

ASSESSMENT:

You will have to complete six units of work which are coursework projects internally assessed by your tutors. In order to successfully complete the coursework projects you will be required to:

- visit businesses
- interview individuals
- carry out book/internet research
- make presentations using PowerPoint
- use Publisher, Excel and Word for letters, business reports, leaflets etc.

YOU WILL STUDY:

- an introduction into business activity
- finance
- setting up in business
- sales and customer service
- business online
- people and business.

IN ORDER TO SUCCEED, YOU WILL NEED TO:

- have an interest in Business!
- be well organised and self-disciplined although we will help you to develop these skills

- be motivated to do well
- have an enquiring mind
- have a range of GCSE's at E and above.

WHAT IS SPECIAL ABOUT THIS SUBJECT?

At the end of a successful year you will have a qualification equivalent to 4 GCSE's A*-C

This is an interesting and varied course which uses local businesses to make the course relevant and up-to-date. It will give you a good foundation in business and the skills and qualification to:

- remain at College to complete an AS course—You need a merit or distinction to do this
- go on to Further Education to follow an advanced course
- get a job

BTEC FIRST DIPLOMA IN HEALTH AND SOCIAL CARE

Awarding Body: Edexcel

This is a full-time course over 1 year.

TO TAKE THIS COURSE YOU NEED:

A minimum of 3 D or E grades or better in GCSE including English.

Along with this course you would have the option of 1 or 2 GCSE retake courses in Maths, English and Science.

ASSESSMENT:

You will be continuously assessed during the course of the year, with the emphasis on high quality assignments. As this is a practical skill-based course you will complete both written and practical assignments, give presentations and work with various groups

in the caring field.

All of the units are assessed through assignments that are set by the course tutors. You will undertake two 12 day sessions of work placement in different settings.

IN ORDER TO SUCCEED, YOU WILL NEED:

- to have an interest in caring for others
- to have taken a range of GCSE examinations and have a good base of GCSE grades at E or above
- to complete all 6 unit assignments.

YOU WILL STUDY:

Two compulsory units of work:

- communication and interpersonal rights
- individual needs.

Plus four further optional units:

- vocational experience
- human lifespan development
- therapeutic and creative activities
- diet and health.

WHAT IS SPECIAL ABOUT THIS SUBJECT?

- It is a practical based course
- work experience is a very important part
- it gives a good foundation for working in this area
- you will achieve the equivalent of 4 grades A*-C if you are successful in all aspects of the course
- you can progress to BTEC National Diploma in Children's Care, Learning and Development or any other advanced level studies.

ONE YEAR COURSES - GCSE

GCSE RETAKE COURSES

Advanced level students without passes in English Language or Mathematics (and BTEC students with grade D's in these subjects) MUST re-sit that subject as a compulsory part of their Sixth Form programme of study.

GCSE Science is an optional re-sit for all students.

ENGLISH LANGUAGE GCSE

This course aims to develop skills in, as well as an understanding and knowledge of, the English language. The course runs for one year, in preparation for the examination in the summer.

YOU WILL LEARN TO:

- write accurately, punctuate sentences and paragraphs
- check accuracy of spelling
- read for specific information and understanding, and make point notes
- write in a variety of styles
 - descriptive, narrative,
 - argumentative and as a personal - reflection
- practise oral skills, particularly in class discussion.

MATHEMATICS GCSE

This course covers aspects of Number and Algebra, Shape, Space and Measures, Handling Data and Using and Applying Mathematics.

It is a revision course for students who wish to improve their GCSE grade. Emphasis will be placed on improving examination performance. For those close to a boundary the examination may be taken in November. Students who will benefit from further teaching will work through the year and take the examination in May/June.

Students are advised to seek advice from their Mathematics teacher regarding level of entry for the examination in the Summer Term.

SCIENCE GCSE

This is a one year course leading to examination in the Summer Term.

It is a revision of the work covered in Years 10 and 11 for single or double award GCSE in Science.

Emphasis will be placed on improving coursework and performance in the terminal paper.

Module results may be carried forward or some or all may be retaken.

TWO YEAR ADVANCED LEVEL COURSES

These are L3 courses leading to qualifications which allow entrance into University or employment at age 18+.

Over 70% of students completing advanced courses go on to study in Higher Education, but not necessarily immediately after leaving school.

SOME POSSIBLE TWO YEAR ADVANCED STUDENT PROGRAMMES

Student A has chosen four AS courses in Year 12 and takes three of them through to Year 13:

<i>Year 12</i>	<i>Year 13</i>
<i>AS French</i>	<i>A2 French</i>
<i>AS History</i>	<i>A2 History</i>
<i>AS Sociology</i>	<i>A2 Sociology</i>
<i>AS Psychology</i>	

so Student A has gained three A levels (French, History, Sociology), and one AS level (Psychology).

Student B has chosen four AS courses in Year 12 and takes three of them through to Year 13 while adding a further AS subject:

<i>Year 12</i>	<i>Year 13</i>
<i>AS Business</i>	<i>A2 Business</i>
<i>AS Media Studies</i>	<i>A2 Media Studies</i>
<i>AS English Language</i>	<i>A2 English Language</i>
<i>AS Art</i>	<i>AS Computing</i>

so Student B has gained three A levels (Business, Media Studies, English Language), and two AS levels (Art and Computing).

Student C has chosen four AS courses in Year 12 and continues all four of them into Year 13 :

<i>Year 12</i>	<i>Year 13</i>
<i>AS Maths</i>	<i>A2 Maths</i>
<i>AS Physics</i>	<i>A2 Physics</i>
<i>AS Biology</i>	<i>A2 Biology</i>
<i>AS Chemistry</i>	<i>A2 Chemistry</i>

so Student C has gained four A levels (Maths, Physics, Biology, Chemistry).

Student D has chosen the BTEC National Diploma in Children's Care, Learning and Development which is a two-year course with built-in work placements resulting in a single qualification worth 3 A-Level passes

<i>Year 12</i>	<i>Year 13</i>
<i>BTEC National Diploma Year 1</i>	<i>BTEC National Diploma Year 2</i>

TWO YEAR ADVANCED LEVEL COURSES - COURSE DETAILS

ART & DESIGN

Examination Board: Edexcel

TO TAKE THIS COURSE YOU NEED:

Grade C or higher in GCSE Art, although students without GCSE Art can sometimes be accepted after consultation with their Key Stage 3 Art teachers and the Head of Art. You would choose this course alongside 3 other AS Level courses. AS Level take Units 1 and 2. A Level taken Units 4 and 5.

SCHEME OF ASSESSMENT:

At Advanced Subsidiary Level all students will complete:

Unit 1 - Research and Personal Investigation Project

Unit 2 - Controlled Assignment

At A2 Level students will complete:

Unit 3 - Specialist Project and Personal Study

Unit 4 - Controlled Test

Units 2 and 4 will be taken at the end of Year 12 and Year 13 respectively

The completion of these units will create a portfolio of work with sketchbooks that will reflect the students' progression, enthusiasm, interests and ability in the subject. This is a component for the pursuit of further qualifications in the subject in colleges of Further and Higher Education.

Coursework will be generated from the following areas of study:

- Fine Art

- 3D Studies
- Graphics
- Textiles

IN ORDER TO SUCCEED, YOU WILL NEED:

- a willingness to work independently
- to research personal ideas
- to develop individual work
- an ability and interest in Art & Design

YOU WILL STUDY:

the development of Art & Design, both from books and from visits to galleries, locally, in London and further afield. Students are visiting Venice in 2009.

YOU WILL LEARN TO:

- use a range of media and techniques
- research ideas and develop them
- develop a range of skills that convey your ideas and feelings using art, craft and design

WHAT IS SPECIAL ABOUT THIS SUBJECT?

- your ideas are the most important
- the course content is largely determined by your individual needs as a young Artist or Designer
- most work is practical which gives you the opportunity to express yourself - much of your time, especially in the second year will be spent on studio work
- your work will be exhibited at the end of the course

ART - PHOTOGRAPHY

Examination Board: Edexcel

TO TAKE THIS COURSE YOU NEED:

A Grade C pass at GCSE in a creative subject such as Media Studies or Art etc.

You would choose this course alongside 3 other AS-Level courses.

AS Level take Units 1 and 2

A2 Level take Units 3 and 4

SCHEME OF ASSESSMENT:

At Advanced Subsidiary Level all students will complete:

Unit 1 - Research and Personal Investigation Project

Unit 2 - Controlled Assignment

At A2 Level students will complete:

Unit 3 - Specialist Project and Personal Study

Unit 4 - Controlled Test

Units 2 and 4 will be taken at the end of Year 12 and Year 13 respectively.

Planning sheets or portfolios are required for each of the units. These chart the development of ideas, document skills learnt and illustrate the interest and enthusiasm of the students on their progress.

IN ORDER TO SUCCEED, YOU WILL NEED:

- an 'eye' for the photographic image
- a desire to look at the work of other photographers
- a willingness to experiment
- time to develop your personal ideas
- commitment

- an SLR camera (35mm or other format) **or** a digital camera (more than 2.0m.pixels).

YOU WILL STUDY:

The development of Photography, both from books and from visits to galleries, locally and in London.

YOU WILL LEARN TO:

- print and develop films (black & white) and use digital equipment
- use camera equipment and lenses
- understand darkroom practice and imaging programmes
- control lighting and exposure techniques
- use alternative print processes and digital imaging
- experiment and be proud of your Images

WHAT IS SPECIAL ABOUT THIS SUBJECT?

Throughout the course your technical and aesthetic skills will continue to improve. Your use of film, camera and printing will develop. You can go on to studying Media, Photography, Art, Film or Journalism.

ONE MORE VERY IMPORTANT POINT:

Photographic film and paper can be expensive. Students embarking on this course must be aware of a cost implication. Standard darkroom apparatus and chemicals will be provided, however, consumable film and paper must be the responsibility of the students.

See Mrs Miatt for more detailed information.

BIOLOGY

Examination Board: OCR

Modular AS and A Level Course

TO TAKE THIS COURSE YOU NEED:

At least 5 GCSE passes at grade C or above, including Biology or Additional Science and maths. *(Please note that Core Science alone is not sufficient).*

You would choose this course alongside 3 other AS-Level courses *N.B. Students are able to opt for either Biology or Human Biology but cannot study both due to the overlap of content.*

PATTERN OF ASSESSMENT AND CONTENT

Biology is made up of **three** mandatory units at AS and **three** further mandatory units at A2.

Two of the AS and **two** of the A2 units are externally assessed.

The third AS unit and the third A2 unit are internal assessments of practical skills.

Examination Dates:

F211 January 2011

F212 June 2011

F214 January 2012

F215 June 2012

Unit F211: Cells, Exchange and Transport

30% of the total AS GCE marks. 1 hr written paper. 60 marks

- Cells
- Exchange and transport

Unit F212: Molecules, Biodiversity and Human Interactions

50% of the total AS GCE marks. 1 hr 45 min written paper. 100 marks

- Biological molecules
- Enzymes
- Biodiversity and classification
- Variation, adaptation and evolution
- Human interactions

Unit F213: Practical Skills In Biology 1

20% of the total AS GCE marks. Coursework. 40 marks.

Candidates are required to carry out three tasks (qualitative, quantitative, evaluative) from a selection provided by OCR and carried out in controlled conditions.

Unit F214: Communication, Homeostasis and Energy

15% of the total Advanced GCE marks. 1 hr written paper. 60 marks

- Communication and homeostasis
- Excretion
- Photosynthesis
- Respiration

Unit F215: Control, Genomes and Environment

25% of the total Advanced GCE marks. 1 hr 45 min written paper. 100 marks

- Cellular control and production of variation
- Biotechnology
- Ecosystems and sustainability
- Responding to the Environment

Unit F216: Practical Skills in Biology 2

10% of the total Advanced GCE marks. Coursework. 40 marks

Candidates are required to carry out three tasks (qualitative, quantitative, evaluative) from a selection provided by OCR and carried out in controlled conditions

Students will take part in a 5 day residential field course to complete part of this assessment.

IN ORDER TO SUCCEED, YOU WILL NEED:

A good, basic academic background. AS Chemistry is a great advantage but not essential. Complementary courses - Chemistry, Geography, Mathematics.

YOU WILL LEARN TO:

- develop their interest in, and enthusiasm for Biology, including developing an interest in further study and careers in Biology;
- appreciate how society makes decisions about scientific issues and how the sciences contribute to the success of the economy and society
- develop and demonstrate a deeper appreciation of the skills, knowledge and understanding of *How science works*;
- develop essential knowledge and understanding of different areas of Biology and how they relate to each other.

WHAT IS SPECIAL ABOUT THIS SUBJECT?

This course gives an introduction to what really happens in cells and organisms and is relevant to further courses, including biological science, biochemistry, medicine and veterinary science.

HUMAN BIOLOGY

Examination Board: OCR

Modular AS and A Level Course

This course has been designed for those students who wish to continue their study of biology after GCSE, but focus on those aspects relating to Human Biology.

TO TAKE THIS COURSE YOU NEED:

At least 5 GCSE passes at grade C or above, including Biology or Additional Science and maths. (*Please note that Core Science alone is not sufficient*)

You would choose this course alongside 3 other AS-Level courses *N.B. Students are able to opt for either Biology or human biology but cannot study both due to the overlap of content.*

PATTERN OF ASSESSMENT AND CONTENT

Human Biology is made up of **three** mandatory units at AS and **three** further mandatory units at A2.

Two of the AS and **two** of the A2 units are externally assessed.

The third AS unit and the third A2 unit are internally assessed and will include the assessment of practical skills.

Examination Dates:

F221 January 2011

F222 June 2011

F224 January 2012

F225 June 2012

Unit F221: Molecules, Blood and Gas Exchange

1 hour written exam. AS Level – 30%

- Molecules and Blood
- Molecules and transport

Unit F222: Growth, Development and Disease

This module also includes a case studies section which is pre-released in February to prepare for the final exam in June. 1 hour 45 mins written exam. AS Level – 50%

- The Developing Cell
- The Developing Individual
- Infectious Disease
- Non-infectious Disease

Unit F223: Practical Skills in Human Biology

Internal Assessment. AS Level – 20%

- Internal assessment of practical skills

Unit F224: Energy, Reproduction and Populations

1 hour written exam. A Level – 15%

- Energy and Respiration
- Reproduction and Populations

Unit F225: Genetics, Control and Ageing

1 hour 45 mins written exam. A Level – 25%

- The Genome
- The Nervous System
- Homeostasis
- ‘The Third Age’

Unit F226: Extended investigation in Human Biology

Internal Assessment A Level – 10%

- Students plan and carry out an extended investigation, linked to their study in module F224

IN ORDER TO SUCCEED, YOU WILL NEED:

A good, basic academic background. Complementary courses - Psychology, Sports studies, Sociology.

YOU WILL LEARN TO:

The aims of these specifications are to encourage candidates to:

- develop their interest in, and enthusiasm for Human Biology, including developing an interest in further study and careers in Human Biology;
- appreciate how society makes decisions about scientific issues and how the sciences contribute to the success of the economy and society
- develop and demonstrate a deeper appreciation of the skills, knowledge and understanding of *how science works*;
- develop essential knowledge and understanding of different areas of Human Biology and how they relate to each other

WHAT IS SPECIAL ABOUT THIS SUBJECT?

Throughout the course, candidates are introduced to the ideas underpinning the study of Human Biology and their application to a variety of contexts, both everyday and more specialized. Their understanding of how science works in Human Biology is deepened.

The specification provides a valuable education for candidates who take their study of Human Biology no further, as it will help to understand our own bodies and how they work. It is also an excellent foundation for further study of Human Biology, biomedical science or other biological sciences.

BUSINESS STUDIES

Examining Body: AQA

TO TAKE THIS COURSE YOU NEED:

At least 5 grade C passes at GCSE, including grade C in English Language. You would choose this course alongside 3 other AS-Level courses.

ASSESSMENT:

100% Examination

IN ORDER TO SUCCEED YOU WILL NEED TO:

- have a lively and enquiring mind
- be interested in current affairs
- possess a range of skills including the ability to solve problems and make decisions
- be able to write fluently and have good numerical skills.

YOU WILL STUDY:

YEAR 12 (AS)

Unit 1 - *Planning and Financing a Business*

You will develop an understanding of the challenges and issues faced when starting a business and the entrepreneurial qualities required. You will also gain in depth knowledge of the key financial concepts needed to start a business.

The Unit 1 exam contains multi choice questions and a data response question.

Unit 2 - *Managing a Business*

In this unit you will consider the key concepts required for managing a successful business. The focus will be on four key areas – People, Operations Management, Finance and Marketing.

The Unit 2 exam is made up of 2 data response questions

YEAR 13 (A2)

Unit 3 - *Strategies for Success*

This unit builds on the work covered in Year 12 and considers the strategies required for larger businesses and how these strategies may change according to circumstances. The focus will again be on four key areas – People, Operations Management, Finance and Marketing.

The Unit 3 exam is based on an unseen case study and includes numerical data.

Unit 4 - *The Business Environment and Change*

This unit considers the effects that external factors can have on businesses and how a business can plan for and manage change, including leadership and change in business culture. The Unit 4 exam is a two part paper. Section one contains questions based on prior research. Section two is a selection of essay titles and is the synoptic paper drawing on all aspects of the course.

WHAT IS SPECIAL ABOUT THIS SUBJECT?

This course will help you to develop a critical understanding of organisations and the markets they serve. You will also understand the management and internal workings of businesses, thus providing an overall view of how a business is run.

You are encouraged to develop the problem-solving and decision making skills required for running your own businesses. These skills are also highly sought after by employers. It is an excellent course for progression into Higher Education and combines well with All A Level subjects as all professionals benefit from understanding how businesses operate.

BUSINESS STUDIES APPLIED **GCE (APPLIED BUSINESS)**

Examination board: AQA

TO TAKE THIS COURSE YOU NEED:

At least 5 grade C passes at GCSE including grade C in English Language.

You would choose this course alongside 3 other AS Level courses.

ASSESSMENT:

Two thirds of the assessment is internally assessed through coursework tasks and the remaining one third (2 units) is externally assessed through examinations.

Assignments will be set by your teachers and based upon research of a business. You will have the opportunity to improve your work during the course of a unit.

IN ORDER TO SUCCEED YOU WILL NEED:

- to be able to work on your own initiative.
- to have good time management skills in order to meet deadlines.
- to be committed to an investigative and research based programme of study.
- to be able to write fluently and communicate your ideas effectively.
- to have a lively and enquiring mind.

YOU WILL STUDY:

YEAR 12 (AS)

Unit 1- *Investigating Business*

You will explore the core activities of a business including the achievement of their aims and objectives, how they remain competitive and the use of marketing. You will investigate the affect of external factors and consider why enterprise is vital for success.

Unit 2 - *People in Business*

This unit investigates the importance of people to a business and considers how organisations are able to get the best out of their workforce. You will also gain an understanding of the recruitment process and have the opportunity to develop the skills associated with this.

Unit 3 - *Financial Planning and Monitoring*

This is an externally assessed unit which looks at how businesses monitor and control their finances. You will develop knowledge of key finance techniques.

YEAR 13 (A2)

Unit 8 - *Business Planning*

This is a synoptic unit which provides the opportunity to produce a business plan for a new product or service. You will develop a range of skills including team working, presentation techniques and enterprise.

Two Optional Units

Two optional units can be chosen from the following range:

- Marketing Strategy
- Promotional Activities
- The Marketing Environment
- Managing People
- Managing Information
- Managing Change
- Financial Accounting for Managers
- Managing Resources

WHAT IS SPECIAL ABOUT THIS SUBJECT?

This course is based upon real business skills and has links to real businesses. It uses contemporary case studies and is designed to give you the qualities businesses wish their employees to have.

You are encouraged to work in a more independent way, reflecting the way people work in most businesses. This makes it an ideal course for progression into both Higher Education and employment. It combines well with all AS and A2 levels as all professionals are required to operate in a business-like way. It will support applications for a wide range of university courses including Management, Law, Retail and Business Studies. This course is an ideal link to further study or employment.

This course suits those students who can work consistently throughout the course. It also provides the opportunity to improve coursework once it has been assessed by your teachers.

CHEMISTRY

Examination Board: OCR

AS Units: F331, F332, F333

A2 Units: F334, F335, F336

TO TAKE THIS COURSE YOU NEED:

At least 5 GCSE passes at grade C or above, including Chemistry or Combined Science. Grade C in Maths is highly desirable also.

You would choose this course alongside 3 other AS-Level courses.

ASSESSMENT:

The AS forms 50% of the assessment weighting of the full A Level and can be taken as a stand-alone specification or as the first part of the full A Level course. Assessment is by written examination for each module plus a practical skills element.

YOU WILL STUDY:

YEAR 12 (AS)

Unit F331- ***Chemistry for Life***

(15% of full award). Consists of two topics and their associated chemical principles:

- The Elements of Life. A study of some elements in the human body, the solar system and the universe.
- Developing Fuels. A study of fuels and the contributions chemists make to developing better fuels.

Examined module: 1hr 15min (January)

Unit F332 - ***Chemistry of Natural Resources***

(20% of full award)

Consists of three topics and their associated chemical principles:

- Elements from the sea. A study of the industrial extraction of bromine and other useful elements from the sea.
- The Atmosphere. A study of the chemical processes occurring in the atmosphere with particular reference to ozone depletion and global warming.
- The Polymer Revolution. A study of the chance discoveries that led to the development of the polymer revolution.

Examined module: 1hr 30min (June).

Unit F333 - ***Chemistry in Practice***

This practical skills unit is teacher assessed and externally moderated by OCR. Candidates are assessed in these skill areas:

- Competence
- Measurement
- Analysis and evaluation
- Observation and interpretation

YEAR 13 (A2)

Unit F334 - ***Chemistry of Materials***

(15% of full award).

Consists of four topics and their associated chemical principles:

- What's in a Medicine? A study of medicines and the pharmaceutical industry focusing on the chemistry of aspirin.
- The Material Revolution. A study of the development of polymers such as Nylon and Kevlar.
- The Thread of Life. A study of insulin and diabetes leading to protein synthesis and genetic engineering.
- The Steel Story. A study of steel production and the prevention of corrosion.

Examined module: 1hr 30min (January)

Unit F335 - **Chemistry by Design**

(20% of full award)

Consists of five topics and their associated chemical principles:

- Agriculture and Industry. A study of the contribution chemistry makes to ensuring a safe and sufficient food supply.
- Colour by Design. A study of colour chemistry using art restoration and fabric dyeing.
- The Oceans. A study of the oceans, their role in regulating the climate, in forming rocks and in supporting life.
- Medicines by Design. An account of the ways chemical principles and techniques are used to investigate the effects of chemicals on the body and to design and make pharmaceuticals.

Examined module: 2hr synoptic paper (June).

Unit F336 - **Individual Investigation**

(15% of full award)

A practical investigation undertaken by the student on a topic of their choice.

Internally-assessed (April - May)

WHAT IS SPECIAL ABOUT THIS SUBJECT?

- A chemistry qualification opens wide the door to the future.
- Chemistry is named as an essential or acceptable A Level for more degree courses than virtually any other subject.
- It offers excitement - discovering a new life-saving drug.
- It is creative - inventing new compounds or new uses for existing ones.
- It is a challenge - solving the problems of the world, hunger, disease, pollution.
- It is satisfying - reducing suffering, improving living conditions.
- It is FUN - practicals and trips away.

WHAT RESOURCES WILL BE PROVIDED WITH THIS COURSE?

There are four fully resourced approaches to teaching the Salters course:

- A **storyline** provides the setting from which the chemistry and skills are developed.
- The **Chemical ideas** provides the underlying chemical principles.
- **Activities** provide practical work as well as many other types of activities, including research exercises, group discussions, applications of IT etc.
- **Revision guides** with questions to test your knowledge as you proceed with your learning.

COMPUTING

AS/Advanced GCE in Computing

Examination Board: OCR

AS and A Level

TO TAKE THIS COURSE YOU NEED:

GCSE in ICT or Applied ICT (at grade A*-C) or AiDA Level 2 Pass and at least 4 other GCSEs at A*-C.

You would choose this course alongside 3 other AS-Level courses.

EXAMINATION PAPERS/ASSESSMENTS:

AS - **Computer Fundamentals**
(Examination 1hr 30mins)

AS - **Programming Techniques and Logical Methods**
(Examination 1hr 30mins)

A2 - **Advanced Computing Theory**
(Examination 2hr)

A2 - **Computing Project**
(Coursework)

COURSEWORK:

Coursework will be completed in Year 13 and submitted for marking internally. A sample of coursework documents will be sent off for external moderation. Coursework represents 20% of the final grade.

IN ORDER TO SUCCEED YOU WILL NEED TO:

- demonstrate practical capability in computing
- demonstrate knowledge and understanding of computer systems and their roles in organisations and society
- apply knowledge, skills and understanding to produce solutions to computing problems
- evaluate computing solutions
- evaluate their own performance

YOU WILL:

- gain an appreciation of computing fundamentals, including hardware, software, the presentation, structure and management of data, how data is

transmitted and networked, the life cycle of systems development, the characteristics of information systems, and the implications of computer use

- gain an appreciation of designing solutions to particular problems, how procedural programs are structured, the types of data and data structures, the common facilities of procedural languages, how to write maintainable programs, and how to test and run solutions
- understand the function of operating systems, the function and purpose of translators, how computer architectures are structured, how data is represented, how data is structured and manipulated, high level language programming paradigms, low level languages and how databases function
- demonstrate an understanding of definition, investigation and analysis, system design, software development and testing, documentation, evaluation and how to produce written reports covering these topics.

WHAT IS SPECIAL ABOUT THIS SUBJECT:

As well as following the standard 4 unit structure this course has less of a crossover with GCE ICT than was previously the case. A more detailed summary of the unit content and assessment model is available at www.ocr.org.uk or from the ICT Department.

DESIGN AND TECHNOLOGY: **PRODUCT DESIGN**

Examination Board: WJEC

TO TAKE THIS COURSE YOU NEED:

At least 5 GCSE passes at grade C or above, including a Design Technology subject such as Resistant Materials, Graphic Products, Systems & Control, or Textiles.

You would choose this course alongside 3 other AS-Level courses.

SCHEME OF ASSESSMENT:

The Advanced Subsidiary (AS) forms 50% of the full A Level course. It comprises of a design and make task and one examination and can be taken as a course in it's own right. The full A Level will be achieved by passing one additional unit (major project) in the second year.

SUMMARY OF ASSESSMENT

AS

DT 1. 20%. 2 hours

Product Design Examination Paper

This paper will contain two sections which will assess candidates' knowledge and understanding drawn from the subject content for one focus area listed below.

4.1.1 - Designing and Innovation

4.1.2 - Product Analysis

4.2.1 - Material and components

4.2.2 - Industrial and commercial practice

Section A questions require short answers. section B questions require open-ended essay type responses.

This component is externally assessed by the WJEC

DT 2. 20% 2.5 hours

Design and Make Task

Candidates will submit one design and make task which will satisfy the AS assessment criteria

The component is marked by the centre and moderated by the WJEC

A Level (the above plus the following A2 units)

DT 3. 20% 2.5 hours

Written paper

This paper consists of two sections and will assess candidates' knowledge and understanding drawn from the whole subject content of one focus area. Section A questions require short answers and section B questions require open-ended essay type responses and will specifically address the subject specification content listed under:

4.1.1 - Designing and Innovation

4.1.2 - Product Analysis

4.1.3 - Human Responsibility

4.1.4 - Public Interaction

4.2.1 - Materials and Components

4.2.2 - Industrial and Commercial Practice

4.2.3 - Processes

4.2.4 - Production Systems and Control

This component is externally assessed by the WJEC

DT 4. 30% (approximately 60 hours)

Major Project.

Candidates will undertake a single substantial project. Each year the WJEC will set eight themes for the project, though candidates may also submit their own proposals for approval. The project requires candidates to demonstrate the integration of designing and making skills and knowledge and understanding.

Candidates will submit a major project which will satisfy the A Level assessment criteria.

This component is marked by the centre and moderated by the WJEC

AT BOTH AS AND A2 LEVEL YOU WILL STUDY:

- design activity and practical application

- materials: their sources, working properties and range of uses.
- design and market influences
- design in practice.
- communication methods
- design in the human context
- industrial and commercial practice
- product manufacturing
- systems and control
- product analysis

YOU WILL LEARN:

- to develop your skills in both design and making, working predominantly in the area of product design
- a range of new techniques and processes beyond the scope of GCSE
- more about industrial and commercial factors affecting production, through visits to local firms.

WHAT IS SPECIAL ABOUT THIS SUBJECT?

The special strength of this subject is the requirement to link theory and practice in project work.

The applied nature of the course requires of students a number of personal qualities including initiative, perseverance, personal organisation and the ability to plan, review and revise ideas where appropriate.

ELECTRONICS

Examination Board: Joint WJEC

A Level and AS Level Modular

TO TAKE THIS COURSE YOU NEED:

Grade C or above in Mathematics GCSE and also grade C in double award Science or Physics GCSE at the higher level. Grade C

from the Foundation tier GCSE is not sufficient.

You would choose this course alongside 3 other AS-Level courses.

The proposed specification in AS/A Level Electronics will comprise four written papers and two coursework units (one for AS and one for A Level).

The four written paper units will be:

AS - *Introduction to Digital and Analogue systems*

AS - *Circuits and Components*

A2 - *Further Digital and Analogue Systems*

A2 - *Communications Systems*

It should be noted that students who have not previously studied Electronics at GCSE Level have achieved great success at A Level.

The internally assessed AS unit will be Control Systems. This unit focuses first on programming at a high level language level using ladder logic programming, progressing to consider micro-controllers such as the PIC-chip.

The internally-assessed A Level unit will be a major project. Candidates will be expected to plan and develop a project, complete the system and write a detailed report.

Examination papers have a common format. They contain both structured questions and questions which require more extended answers.

IN ORDER TO SUCCEED, YOU WILL NEED:

- interest in Electronics and technology matters
- initiative, industry and objectivity
- concern for accuracy and precision
- mathematical and experimental skills

YOU WILL LEARN TO:

- solve problems by investigating, designing, constructing and testing electronic circuits.
- use test equipment effectively - CRO, multimeter, function generator.
- produce hardware and documentation for an extended piece of technical work.

WHAT IS SPECIAL ABOUT THIS SUBJECT?

- it allows you to learn through doing. Every circuit considered in theory can be, and usually is, built by you.
- it provides excellent background information for courses/careers in Science or Engineering.
- it approaches the subject material in such a way that the knowledge and skills required are easily transferred to other areas, and so remain useful for life.

ENGLISH LANGUAGE

Examination Board: AQA

AS Level and A2 Level

TO TAKE THIS COURSE:

You need at least five GCSE passes at grade C or higher (at grade B is preferred) including at least grade C from the higher level GCSE English paper. Grade C from the Foundation level GCSE is not sufficient.

You would choose this course alongside three other AS Level courses.

SCHEME OF ASSESSMENT

The A Level award comprises two compulsory modules for the AS scheme of assessment and two modules for the A2 scheme of assessment.

AS EXAMINATIONS

- **Module 1 - Categorising Texts**
External examination - 2 hours; 60% AS, 30% of A Level

This unit covers the introductory aspects of the study of language, using a variety of texts for the basis of this study. In addition it focuses on three specific social contexts: Language and Power, Language and Gender and Language and Technology.

- **Module 2 - Creating Texts**
Coursework; 40% of AS, 20% of A Level

The aim of this coursework unit is to allow candidates the opportunity to develop and reflect upon their own writing expertise.

A2 EXAMINATIONS

- **Module 3 - Developing Language**
External examination - 2 hours 30 mins; 30% of A Level

The aim of this module is to develop candidates' understanding of the key concepts and theories surrounding language study. Candidates will be expected to develop their skills and knowledge from their AS studies, with an additional focus on two new topics: the acquisition of language by children and the development of and changes in English over time.

- **Module 4 - Investigating Language**
Coursework; 20% of A Level

The aim of this module is to develop candidates' ability to explore and analyse language data through a variety of methods. It should enable candidates to build upon the key concepts and ideas gained during the course of their studies, as well as to demonstrate expertise in areas of individual interest.

IN ORDER TO SUCCEED YOU WILL

NEED:

- the ability to write fluently for a variety of different purposes and audiences
- an interest in responding to English texts drawn from a very wide variety of sources past and present
- the initiative to carry out research into the way language is used and present your findings clearly

YOU WILL STUDY:

- a greater variety of texts than you have ever come across before
- the way in which the English Language has changed over time
- the way in which children acquire their own language in speech and writing
- differences in the way people from different parts of the country, social classes, and occupation use language
- the ways in which language has been shaped by technology
- the different ways men and women use language
- differences between speech and writing

WHAT IS SPECIAL ABOUT THIS SUBJECT?

English Language AS and A2 courses encourages students to develop their interest in and enjoyment of English, through learning about its structures and its functions, its development and its variations. It also allows students to develop their ability to express themselves both in speech and writing with increasing competence and sophistication; to encounter a varied range of reading and to develop their skills of critical and attentive listening. Ultimately, the course will allow the avid student to develop a better appreciation of their versatile and colourful 'Mother Tongue'. As a result the student of English Language will become a better judge of 'good' English and a skilled communicator. Therefore, English Language is a useful

subject for both entry into Higher Education and also the workplace.

ENGLISH LITERATURE

Examination Board: Edexcel

AS Level and A2 Level

TO TAKE THIS COURSE YOU NEED:

At least five GCSE passes at grade C or higher (at grade B is preferred) including at least grade C from the higher level GCSE English paper. Grade C from the Foundation level GCSE is not sufficient.

You would choose this course alongside three other AS-Level courses.

SCHEME OF ASSESSMENT:

AS and A2 courses are radically different from previous A Level courses. However, there are certain features, which are common to those taken previously.

- Each year's course comprises two papers, one of which is examined, one which is coursework. The emphasis is on teaching analytical skills, rather than on teaching texts; so all questions will be generic, and comparative.
- More texts are studied than in previous years, where primary texts are supported by secondary research and additional 'wider reading'. This places a strong emphasis on the student's independent work. Over the two year course, twelve texts will be studied in detail.
- Shakespeare continues to be an integral part of the syllabus.
- There is a creative element to the coursework which is closely linked to critical analysis.
- Students need to be interested in the literary tradition, be able to work independently, and be willing to read

widely. B grades in English Language and English Literature are generally required.

IN ORDER TO SUCCEED, YOU WILL NEED:

To be a voracious reader and willing to approach challenging texts. You need to have an interest in history, in literature, and in the human condition. You will need to develop a very clear and organised writing style, and have opinions of your own which you can support with evidence.

YOU WILL STUDY:

A range of texts, which are selected from across the spectrum of poetry, prose and drama. Some texts include:

- selected poems from *The Rattle Bag*, ed. Seamus Heaney and Ted Hughes
- *Jane Eyre*, Charlotte Bronte
- *Wide Sargasso Sea*, Jean Rhys
- *Pride and Prejudice*, Jane Austen
- *Wuthering Heights*, Emily Bronte
- *The Scarlet Letter*, Nathaniel Hawthorne
- *Howards End*, E M Forster
- *The Remains of The Day*, Kazuo Ishiguro
- *Othello*, Shakespeare
- *The Merchant of Venice*, Shakespeare

YOU WILL LEARN TO:

Explore texts from a range of perspectives and use a variety of skills including:

- to use detailed knowledge and understanding of individual works of literature to explore relationships between texts
- to show knowledge and understanding of a range of literary texts
- experience and appreciate a wide range of texts

- (at AS) show knowledge and understanding of the functions and effects of structure, form and language; how texts are interpreted by different readers; and how texts relate to each other within their contexts
- (at A2) show knowledge and understanding of: how writers adapt language, form and structure, how texts relate to literary traditions, movements and genres and the cultural and contextual influence upon readers and writers

WHAT IS SPECIAL ABOUT THIS SUBJECT:

Literature deals with the big human issues, and provides insight into how these have affected individuals over the centuries. It requires reading at the highest level, with empathy, intuition and inference. You will learn to write well about literature; this means maintaining organisation and clarity, while dealing with issues that are complex and never black and white. If you can write well about poetry you can write well about anything!

FILM STUDIES

Examination Board: WJEC

AS and A Level

TO TAKE THIS COURSE YOU NEED:

GCSE grade of C or above in Media Studies or English.

You would choose this course alongside 3 other AS Level courses.

COURSE OUTLINE:

TWO UNITS IN YEAR 12:

- Exploring Film Form is a coursework unit combining written analyses of chosen film extracts and creative work based on

the making of a short sequence of film. This unit is worth 20% of the final A Level grade.

- British and American Film requires students to answer three questions, one from each section of the paper: a response to previously unseen information about producers and audiences; British film; and a comparative study of 2 American films. This unit is assessed by examination and is worth 30% of the final A Level grade.

TWO UNITS IN YEAR 13:

- Film Research and Creative Projects is a coursework unit which involves an independent research project and creative filmmaking or screenplay writing.
- Varieties of Film Experience; Issues and Debates is a 2 $\frac{3}{4}$ hour exam with three questions; World Cinema, Spectatorship and a critical study of a chosen film.

Both units in Year 13 are worth 25% of the final A Level grade.

RATIONALE

Film Studies is designed to deepen students' understanding, appreciation and enjoyment of film, the major art form of the 20th century, and a cultural art form of enormous significance.

This syllabus builds on the cine-literacy that students develop as part of their armoury of languages as they grow up. The course will especially concentrate on the skills of understanding film and the audience's interpretation of film.

WHAT IS SPECIAL ABOUT THIS SUBJECT?

This course is suitable for those who wish to develop a strong base to take into undergraduate studies or more practical media courses. It develops skills in research,

analysis and thinking, and cine-literacy.

FOOD TECHNOLOGY

Examination Board: WJEC

AS and A Level Course

A course in Technology offers a unique opportunity for students to identify and solve real problems by designing and making products or systems in a wide range of context relating to their personal interests. Food Technology develops interdisciplinary skills and a capacity for imaginative, innovative thinking, creativity and independence.

TO TAKE THIS COURSE YOU NEED:

At least 5 grade C passes at GCSE. You would choose this course alongside 3 other AS-Level courses. It is not essential to have a GCSE in Food Technology, although it is an advantage in terms of knowledge and skills already acquired.

SCHEME OF ASSESSMENT

The Advanced Subsidiary (AS) forms 50% of the full A Level course. It comprises of 2 units and can be taken as a course in its own right. The full A Level will be achieved by passing two additional units in the second year.

EXAMINATION PAPERS

This is a modular course with external examinations at the end of each year, plus coursework modules.

AS LEVEL (YEAR 1)

DT1

Examination Paper 2 hours. June. (40% AS, 20% Advanced)

This paper will contain two sections which will assess candidates' knowledge and understanding drawn from subject content for one focus area listed opposite.

- **4.1.1 Design and innovation**
- **4.1.2 Product Analysis**
- **4.2.1 Materials and Components**
- **4.2.2 Industrial and Commercial Practice**

Section A requires short answers. Section B requires open ended essay type responses

DT2

Coursework - Design and Make Task (60% AS, 30% Advanced) - collective work over Autumn Term (approximately 60 hours)

Candidates will submit one design and make task which will satisfy the AS assessment criteria. This is marked by subject teachers and moderated by the exam board.

A2 LEVEL (YEAR 2)

DT3

Examination paper 2.5 hours. June (20% Advanced)

This paper consists of three sections and will assess the candidates' knowledge and understanding drawn from the whole subject content of one focus area. Section A and B questions require short answers and section C questions require open-ended essay type responses and will specifically address the subject specification content listed below

- **4.1.1 Design and Innovation**
- **4.1.2 Product Analysis**
- **4.1.3 Human Responsibility**
- **4.1.4 Public Intervention**
- **4.2.1 Materials and Components**
- **4.2.2 Industrial and Commercial Practice**
- **4.2.3 Processes**
- **4.2.4 Production System and Control**

DT4

Major Project - Design and Make Task (30% Advanced)

Candidates will undertake a single substantial project. Each year the exam board will set eight themes for the project, though candidates may also submit their own proposals for approval. The project requires the candidates to demonstrate the integration of designing and making skills and their knowledge understanding. Candidates will submit a major project which will satisfy the A level assessment criteria. This component is marked by the subject teachers and moderated by the exam board.

IN ORDER TO SUCCEED, YOU WILL NEED:

- a genuine interest in food production and design and determination to succeed
- to enjoy practical food and investigative work
- a creative flair and understanding of food products
- the ability to identify and solve real problems

AT BOTH AS AND A2 YOU WILL STUDY:

- Design activities and practical application
- Communication skills
- A working knowledge and understanding of materials and components in a range of contexts
- Industrial and commercial practices in food technology
- Human responsibility in design
- Design and market influences

WHAT IS SPECIAL ABOUT THIS SUBJECT?

There will be the opportunity to develop your skills in a practical and theoretical way within

the Food Technology area. There is a great deal of flexibility in the approach to coursework, allowing for individual interests. There will be many opportunities for practical food preparation and testing, research and visits out of school.

It is not essential to have GCSE Food but a genuine interest in food is essential. Employment opportunities in Food Technology are very varied, appealing to all and this A-Level would be a good starting point for a career in the industry, via Higher Education or direct entry into employment. It is also a good course to take to widen your studies, and the practical element will give variety to your work in the Sixth Form.

Note: *It is not possible to take both DT Food and DT Product Design.*

GEOGRAPHY

Examination Board: Edexcel

TO TAKE THIS COURSE YOU NEED:

At least 5 grade C passes at GCSE. Grade C or above in Geography is highly desirable, but students without GCSE Geography can sometimes be considered.

You would choose this course alongside 3 other AS-Level courses.

ASSESSMENT:

The course is made up of 4 modules. Two will be completed for AS in Year 12 and two more in Year 13 to complete the A Level.

The modular exams can be taken in January or June with one retake of each allowed.

IN ORDER TO SUCCEED, YOU WILL NEED:

- to develop a range of geographical skills and be able to analyse problems and issues.

- an interest in environmental, economic and political issues.

YOU WILL STUDY:

Issues investigated on a local, regional and global scale, through the following topics:

- global challenges – Hazards, climate change, population and globalisation.
- geographical Investigations – Extreme weather, coasts, urban/rural and rebranding places
- contested Planet – Energy, water, biodiversity, superpowers, development and technology
- geographical Research – Tectonics, cold environments, pollution and leisure & tourism.

fieldwork is an essential part of these studies and required to complete two of the units. Various options will be available.

YOU WILL LEARN:

- study skills.
- analytical skills, including qualitative and quantitative techniques.
- debating skills.
- decision making techniques about current environment, social and economic issues.

WHAT IS SPECIAL ABOUT THIS SUBJECT?

Higher Education institutions acknowledge the content and approach of this particular course as being highly relevant and a good foundation for post A Level study on a wide variety of academic and vocational courses.

The communicative and analytical skills developed are recognised as having direct relevance to a wide range of careers.

HISTORY

Examination Board: Edexcel

TO TAKE THIS COURSE YOU NEED:

At least 5 grade C passes at GCSE. Grade B or above in History is highly desirable, but students without GCSE History can sometimes be considered if the GCSE English grade is strong enough.

You would choose this course alongside 3 other AS-Level courses.

Unit 1 - ***Historical Themes in Breadth***
The Wars of the Roses (1455-85) and the Reign of Henry VII (1485-1509)
(1 hour 20 mins) June (50%)
Essay paper

Unit 2 - ***British History Depth study***
Conflict and Change in 19th and 20th Century Britain
(1 hour 20 mins) June (50%)
Source paper

Unit 3 - ***Depth Study and Historical Controversy,***
Protest, Crisis and Rebellion in England (1536-88)
(2 hours) June (30%)
Essay / Source paper

Unit 4 - ***Historical Enquiry.***
The Making of Modern Russia (1856-1964)
(Coursework)
March (20%) Essay

IN ORDER TO SUCCEED, YOU WILL NEED:

- the desire to read and explore historical sources and texts.
- to discuss and analyse (both orally and on paper).
- continually to question why events took place as they did to be able to formulate your own conclusions.

YOU WILL STUDY:

Over the AS/A2 course you will study:

Two units of Early Modern History on the Tudors (Unit 1 – AS and Unit 3 – A2) including:

- The Wars of the Roses – Henry VI, Edward IV, and the reign of Richard III and the Battle of Bosworth (Unit 1)
- The Reign of Henry VII – Securing the throne, Tudor nobility, foreign policy (Spain, France etc.) (Unit 1)
- Protest and Rebellion (1536- 88) – faction, religious change, relations with Spain, Rebellions – Pilgrimage of Grace, Kets Rebellion, Western Rebellion, Wyatts Rebellion, Northern Earls (Unit 3)

and

Two units of Modern History on War and Russia (Unit 2 – AS and Unit 4 – A2) including

- The Experience of Warfare (1854 - 1929) - social and political change in Britain including the impact of War on public attitudes, medicine, social change, propaganda and factors influencing women's changing role in society. (Unit 2)
- The Making of Modern Russia (1856 - 1964)
- Late Tsarist Russia, the causes and consequences of the Revolution of 1917, Bolshevik Russia and the Civil War, the creation of the USSR Stalin, dictatorship, Khrushchev and destalinisation. (Unit 4)

YOU WILL LEARN TO:

- read and make notes independently and produce your own interpretations of the past.
- develop skills that will be attractive to future employers and/or centres of further study.

WHAT IS SPECIAL ABOUT THIS SUBJECT?

Through your study of history you will extend and develop your research skills to gain greater historical knowledge and understanding. You will then further your skills of reasoning and analyse through debate and discussion in order to fully substantiate independent judgements.

APPLIED INFORMATION & COMMUNICATIONS TECHNOLOGY

AS/Advanced GCE in Applied ICT

Examination Board: Edexcel

AS and A Level

TO TAKE THIS COURSE YOU NEED:

GCSE in ICT or Applied ICT (at grade A*-C) or AiDA Level 2 Pass or Level 1 Distinction and at least 4 other GCSEs at A*-C. You would choose this course alongside 3 other AS Level courses.

EXAMINATION PAPERS/ASSESSMENTS:

AS - *The Information Age*
(Portfolio Assessment)

AS - *The Digital Economy*
(Portfolio Assessment)

AS - *The Knowledge Worker*
(External Examination)

A2 - *Using Database Software*
(External Task completed under supervision)

A2 - *Managing ICT Projects*
(Project)

A2 - *Using Multimedia Software/ Using Spreadsheet Software*
(Optional unit. Portfolio Assessment)

COURSEWORK:

Portfolio work will be submitted using an e-portfolio. The External Task is a board set practical task completed in lessons. Each unit contributes 33% of the final grade.

IN ORDER TO SUCCEED YOU WILL NEED TO:

- demonstrate practical capability in applying ICT
- demonstrate knowledge and understanding of ICT systems and their roles in organisations and society
- apply knowledge, skills and understanding to produce solutions to ICT problems
- evaluate ICT solutions
- evaluate their own performance

YOU WILL LEARN TO:

- use a wide range of ICT tools and techniques in a variety of practical activities
- identify the components and functions of a wide range of ICT systems
- understand the role of ICT in a range of organisations
- discuss the positive and negative effects of ICT on society and individuals
- produce efficient solutions to a variety of problems
- identify strengths and weaknesses in your work
- reflect on your experiences to improve performance

WHAT IS SPECIAL ABOUT THIS SUBJECT:

Unlike traditional A Levels, Applied A Levels relate the learning experience to the workplace and practical activities. This is evident in the assessment scheme, where a traditional A Level has 2/3 examination and 1/3 practical assessment the Applied A Level reverses this emphasis with 2/3 practical work

and 1/3 examination. It is aimed at those who prefer to learn through an active learning style.

A more detailed summary of the unit content and assessment model is available at www.edexcel.org.uk or from the ICT Department.

LANGUAGES: **MODERN EUROPEAN**

German/Spanish/Italian

Examination Board: Edexcel

TO TAKE ANY OF THESE COURSES YOU NEED:

To gain at least a grade B at GCSE

SCHEME OF ASSESSMENT:

Unit 1 (Oral) in April / May. 30% of total AS marks

Unit 2 (3 sections) in June. 70% of total AS marks

French

Examination Board: WJEC

TO TAKE THIS COURSE YOU WILL NEED:

At least a grade B at GCSE

SCHEME OF ASSESSMENT:

Unit 1 (Oral) in May / June. 20% of A2 marks

Unit 2 (Listening, Reading and Writing) June. 30% of A2 Marks

IN ORDER TO SUCCEED YOU WILL NEED:

To be able to converse in the foreign language, convey opinions and interact and respond to a range of questions

In addition you will be expected to recognise and use the target language in a variety of contexts

YOU WILL STUDY

- Youth Culture and concerns
- Lifestyle: Health and Fitness
- The World around us: travel, tourism, environmental issues
- Education and employment

YOU WILL LEARN TO:

Communicate confidently, clearly and effectively and develop an awareness and understanding of the contemporary society, cultural background and heritage of countries/communities where the language is spoken.

WHAT IS SPECIAL ABOUT THIS SUBJECT?

You will acquire knowledge, skills and understanding for practical use, further study and employment. It will also enable you to take your place in a multilingual global society.

LANGUAGES: NON-EUROPEAN

Japanese

Examination Board: Edexcel

AS and A Level

TO TAKE THIS COURSE YOU NEED:

A minimum of five grade C or higher GCSE passes with an expected B grade in Japanese

You would choose this course alongside 3 other AS-Level courses.

AS UNIT 1 READING AND WRITING:

There is one exam for the AS which consists of 3 sections:

Section 1 - *You will read three passages in Japanese, and then answer questions on them in Japanese.*

Section 2 - *You will read a passage in Japanese and translate it into English.*

Section 3 - *You will be expected to read a short printed Japanese text for a task, such as writing a letter, report or article in Japanese. Your work should be around 200 words / 250 characters.*

A2 UNIT 2 READING AND WRITING:

Topics and Texts

The examination consists of 3 sections:

Section 1 - *You will read a text in Japanese and answer questions in Japanese. You will also translate a piece of contemporary text from English into Japanese.*

Section 2 - *In advance of the examination, you will have chosen two topics, two texts or a topic and a text from a list of suggestions. The topics will include such things as history, media, and culture; the texts will be a range of contemporary and classical books, poetry and short stories. In this section, there will be a choice of two questions on the selected topics or texts. You can choose to answer either question, and your answer should be at least 250 words / 300 characters.*

There are no coursework requirements

IN ORDER TO SUCCEED, YOU WILL NEED:

- to be well motivated
- to be interested in the Japanese language and communication
- to enjoy learning about Japanese cultures and ways of life
- to enjoy learning Kanji

YOU WILL STUDY:

Reading and writing in more detail in order to read, understand and extract information from authentic written passages in the target language and in order to write essays on a variety of topics in the target language.

WHAT IS SPECIAL ABOUT THIS COURSE?

Apart from learning how to express yourself effectively and confidently on a wide range of topics and developing a deeper insight into the culture of another contemporary and economically powerful society, you will be opening up a range of opportunities in the world of work and academia. If you are interested in the business world, travel or tourism, literature, or in journalism and the media, you are likely to find the course appropriate.

Some students choose to do a degree course in languages, others choose to pursue a Higher Education course in another subject but with a language option alongside it. Having a language at AS or Advanced GCE will certainly improve employability, having a Non-European language is an excellent step towards putting yourself even higher on the work ladder.

LAW

Examination Board: AQA

AS and A2

TO TAKE THIS COURSE YOU NEED:

A minimum of five grade C or higher GCSE passes including grade B in English. You would choose this course alongside 3 other AS-Level courses.

EXAMINATION PAPERS:

AS Unit 1 - ***Law Making and the Legal System.*** January. 1 hour 30 mins. Essay paper. 50% of AS

AS Unit 2 - **The Concept of Liability.**
June. 1 hour 30 mins. Compulsory written paper requiring analysis of legal scenarios. 50% of AS

A2 Unit 3 - **Criminal Law (Offences against the Person)** 25% of total A Level marks. 1 hour 30 mins. One compulsory three part question, based on a Criminal Law scenario

A2 Unit 4 - **Criminal Law (Offences against property) and Concepts of Law** 25% of total A Level marks. 2 hours. One multipart question, based on a Criminal Law scenario. One essay.

IN ORDER TO SUCCEED YOU WILL NEED:

- an interest in current affairs.
- a desire to understand the place of law in society.
- to discuss, debate, analyse a range of material.
- the ability to reason and appreciate various points of view.

YOU WILL STUDY:

AS LAW

Module 1 - An exploration of the law through the creation of legislation and its interpretation and the doctrine of precedent.

The people and institutions concerned with civil and criminal cases. The courts, the legal profession, judges.

Module 2 - An introduction to criminal law with particular reference to non-fatal offences against the person. Procedures in civil courts and sentencing.

An introduction to the civil law through liability in tort for physical injury and damage. Procedures in civil courts and compensatory damages.

A2 LAW

Introduces the student to more substantive

areas of law, concentrating on Criminal Law and developing a deeper understanding of the English Legal System.

Module 3 - Criminal Law (Offences against the Person). Murder, voluntary and involuntary manslaughter, non-fatal offences and defences.

Module 4 - Criminal Law (Offences against Property). Theft, robbery, burglary, deception offences, criminal damage and defences.

Concepts of Law. Morals, justice and judicial creativity

YOU WILL LEARN:

to appreciate the law and its function in society. To understand what is happening in the wider world when you watch the news, and how and why to take part in the more formal aspects of adult life, such as voting.

WHAT IS SPECIAL ABOUT THIS SUBJECT?

The law governs all aspects of our lives, even if we are not always aware of it. This course introduces you to the concepts of justice and morality that lie behind the law. You will hear from some of the professionals involved in the legal process, the police, our MP and magistrates. You may visit a police station and Plymouth Magistrates and Crown Court to see the law in action. There is also the opportunity to visit the Royal Courts of Justice, Parliament and the Inns of Court.

Law is an academic subject that combines well with a wide range of other subjects and can also act as an introduction to the work of the legal profession.

LEISURE STUDIES

Applied GCE

Examination Board: AQA

TO TAKE THIS COURSE YOU NEED:

At least 5 grade C passes at GCSE, including grade C in English Language. You would choose this course alongside 3 other AS Level courses.

Single A Level / 6 units AS Level / 3 units.

ASSESSMENT:

Two thirds of the assessment is internally assessed through coursework tasks and the remaining one third (2 units) are externally assessed through examinations.

IN ORDER TO SUCCEED YOU WILL NEED:

- to be able to work on your own initiative
- to have good time management skills in order to meet deadlines
- to be committed to an investigative and research based programme of study
- to be able to write fluently and communicate your ideas effectively
- to have a lively and enquiring mind and an interest in leisure and recreation.

YOU WILL STUDY:

YEAR 12 (AS)

Unit 1 - *The Leisure Industry Today*

An introduction into the industry's structure and development. You will look at leisure in the UK as well as Europe.

Unit 2 - *A People Business*

This is an external examination which will be taken over 10 hours. You will investigate the provision of customer service and it's importance in the leisure

industry. You will develop an understanding of the range of customer service skills required for different situations.

Unit 3 - *Getting it Right in the Leisure Industry*

This unit focuses on the systems used by leisure organisations. You will investigate how a safe environment is created, the key quality systems used and how leisure organisations use marketing.

YEAR 13 (A2)

Unit 8 - *Leisure in Action*

This provides an opportunity to work as part of a team to plan, carry out and evaluate a real project which is relevant to the leisure industry.

Unit 9 - *Working in the People Business*

This is an examination unit which will enable you to investigate the career opportunities available in the leisure industry. You will study recruitment, training and motivation.

Unit 10 - *Current Issues*

An evaluation of the circumstances which have led to the industry's present situation with a focus on one particular current issue of your choice. This is an independent investigation.

WHAT IS SPECIAL ABOUT THIS SUBJECT?

The 6 unit Applied GCE in Leisure Studies combines leisure and sporting interests with a grounding in business education. You will find out about the industry through investigations, practical work and the possibility of work experience and visits abroad to places such as Sweden.

This course enables progression into both Higher Education and employment. It combines well with AS and A2 levels such as Sports Studies, Business Studies, Geography

and Media Studies. It will support applications for a wide range of university courses such as Sports Science, Leisure Studies, Management and Business Studies.

The course also develops the skills that employers want and provides opportunities for employment in areas such as Management, Leisure Activities, Armed Forces and the Civil Service.

MATHEMATICS

Examination Board: Edexcel

AS and A Level

TO TAKE THIS COURSE YOU NEED:

A grade B in Maths with a minimum of five grade C or higher GCSE passes. You would choose this course alongside 3 other AS Level courses, with the option of Further Maths as a fifth subject.

In **Year 12** you will study three modules:

Core 1 and Core 2 which are Pure Mathematics modules along with Statistics 1. Many Higher Education courses and careers include an element of statistics and this module covers many of the basic techniques.

These three modules are each assessed by a 1½ hour written exam. Core 1 is taken in January of Year 12 and Core 2 and Statistics 1 in May/June of Year 12. The 3 modules make up the AS qualification.

In **Year 13** a further 3 modules are studied:

C3 and C4 which are both pure mathematics modules that continue to build on the work covered in Core 1 and Core 2.

As their third module the majority of students take Mechanics 1. It is sometimes possible to take Statistics 2 as the third module depending on student numbers.

These three modules are each assessed by a 1½ hour written exam. The 6 modules make up the A2 qualification.

IN ORDER TO SUCCEED, YOU WILL NEED:

- success in GCSE Mathematics, hopefully resulting in an A*, A or B. Some grade C candidates have succeeded in the past but often struggled with the course
- a willingness to match the time spent in lessons with independent study
- an enthusiasm for the subject

YOU WILL STUDY:

- Algebra
- Trigonometry
- Coordinate Geometry
- Vector Geometry
- Calculus
- Probability
- Statistical methods and statistical modelling
- Kinematics and mechanics.

YOU WILL LEARN TO:

Apply Mathematics to a range of problems from the real world.

WHAT IS SPECIAL ABOUT THIS SUBJECT?

A Level Mathematics supports many Higher Education courses as well as leading to the study of mathematics itself. A growing number of courses and careers require a knowledge of statistical methods. Mathematics opens the door to numerous career opportunities including accountancy, banking, financial management, actuarial work, architecture, data processing, operational research, engineering, medicine, surveying and many more.

FURTHER MATHEMATICS

Examination Board: Edexcel

TO TAKE THIS COURSE YOU NEED:

Grade A or A* in Mathematics GCSE. You would choose this course in addition to AS-Level Mathematics and three other AS-Level subjects. It is taught on a reduced time allocation of 5 lessons a fortnight instead of the usual 9 lessons a fortnight.

For the AS qualification 3 further modules are studied in Year 12 in addition to those taken for AS mathematics. For the A2 qualification a total of 6 further modules are studied over the two years.

Students will study further Pure Mathematics FP1, FP2, and possibly FP3. The Applied Mathematics modules will be chosen from Decision 1, Statistics 2, possibly 3 or 4, and Mechanics 2 possibly 3 or 4. The final choice of modules studied would depend on the majority taking the course.

The student completing 12 modules successfully will be awarded both Mathematics and Further Mathematics.

This course is offered to those students who wish to study A Level Mathematics in both greater depth and breadth than the single subject course.

Students contemplating a university degree course in Mathematics should seriously consider A Level Further Mathematics.

MEDIA STUDIES

Examination Board: OCR

AS and A Level

TO TAKE THIS COURSE YOU NEED:

GCSE grade C or above in Media Studies or English.

Whilst it is clearly an advantage if you have studied Media at GCSE it is by no means essential to have done so.

STUDY SKILLS INCLUDE:

- practical work involving print and film
- analysis of a range of media texts
- research into the role of mass communication in society

COURSE OUTLINE:

There are two units in Year 12:

- Foundation production. From a choice of briefs, students work in print or film to produce an authentic media text. Students are assessed for research and planning, construction and their evaluation of the project. Group work is permitted. The practical is assessed through coursework.
- Key Media Concepts. This is an examined unit which looks at issues of media ownership and the messages and values encoded in television drama.

Both units are worth the same amount: 25% of the final A Level grade. A good foundation from Year 12 work is essential to succeed in Year 13 when students are required to be more independent in their learning. Good organisation and motivation are key factors in ensuring success at both AS and A2 level.

WHAT IS SPECIAL ABOUT THIS COURSE?

This course is suitable for anyone who enjoys working creatively and is interested in the Media. There are also well established routes for students into Higher Education, and careers in Television, Film, Radio, Newspaper or Magazine industries.

MUSIC

BTEC MUSIC PERFORMANCE

Awarding Body: Edexcel

QUALIFICATION: BTEC NATIONAL AWARD MUSIC (PERFORMANCE)

Duration: 2 years

COURSE CONTENT:

The Edexcel Level 3 BTEC National Award in Music (Performing) consists of three core units plus three specialist units that provide for a combined total of 360 guided learning hours (GLH) for the completed qualification.

This course is aimed primarily at students who are interested in developing practical music skills, have a passion for performing and might be considering a career in the Music Industry. It is a very practical course and is centered around music performance and related activities.

For the practical units you will often be given projects which will lead to a Gig. The size of your band and the type of material you will be playing will vary greatly – it is an aim of the course to introduce you to a wide variety of music and performance experiences. In previous years students have performed 50s Rock'n'Roll, Latin American dance music, Folk Songs from Britain and Ireland, Classic 60s soul, songs from the year 1968, Experimental and electronic music, and many more.

THE COURSE IS DESIGNED TO BE ABLE TO:

Develop skills and gain confidence in performing in a wide range of musical styles.

Develop specific skills in rehearsing, arranging and preparing for performances, working from a variety of sources including recorded music and various forms of notation.

Learn to perform effectively to an audience, paying attention both to musical issues and other issues such as appropriate dress, stance, communicating with the audience etc.

Have an understanding of music's place in the world; how it functions as an industry, the work opportunities available for musicians today, the role of music in society, how it is effected by politics and economics.

Learn specific music related skills including music theory skills, use of notation software and safe and appropriate use of equipment.

Develop appropriate skills to organise and run musical events, including marketing, programming, customer care, and working safely.

Have opportunities to chose areas to develop specialist skills, including operating live sound equipment, leading community-based music workshops, developing a portfolio of compositions or doing in-depth researching into an area of your choice.

The six unit BTEC National Award is equivalent to one A Level. It also attracts UCAS points in the same way as an A level.

ENTRY REQUIREMENTS:

5 GCSEs at Grade C or above plus playing skills at Grade 3+ or equivalent. Those with additional instruments, experience of band work and song writing will also be at an advantage. All applicants will be required to audition to gain a place on this course.

PROGRESSION OPPORTUNITIES:

BTEC National Awards are recognised by employers and higher education (universities and colleges). Students may plan to go into careers such as Music Management, Teaching, Performance or Production.

If you decide to go to university or college you could take a degree such as a B.Mus., B.A., or a BTEC Higher National in a related area.

PERFORMANCE STUDIES

Examination board: OCR

AS and A Level

TO TAKE THIS COURSE YOU NEED:

- A minimum of 5 Grade C or higher GCSE passes. These should include Drama or Dance or Music and English.
- Students with alternative practical experience or reason for not having the GCSE requirements would be considered.
- You will need an interest in Music and whilst music qualifications, whether instrument or vocal based, are helpful they are not a necessity.
- You should choose this course alongside 3 other AS-Level courses.

EXAMINATION PAPERS:

- **Coursework** combining practical and written drama, dance and music theoretical practise (20%)
- **Written Paper** on Drama and Dance theory (30%)
- **Practical Performance** in Drama and Dance and Combined Arts (50%)

IN ORDER TO SUCCEED YOU WILL NEED:

- The most important thing is a 'have a go' attitude and a willingness to learn, relearn and develop Performance knowledge and experience
- to have a strong interest and commitment to all aspects of the Performing Arts
- to be prepared to commit to group work and rehearsals
- to visit performance venues during the course
- to have excellent attendance, punctuality and motivation
- to appreciate the strengths and weaknesses of others and yourself

- a good sense of humour
- a genuine interest to progress as a performer.

YOU WILL STUDY:

- **Creating Performance (G401a)** - a series of practical workshops in drama, dance and music which will lead to mini-performances. This will form the 1st part of a 3,000 word coursework project, which is externally moderated
- **Community Theatre (G401b)** - students devise and perform an original piece of theatre from research into the local community in a community venue. The work is assessed and also forms the 2nd part of a 3,000 word coursework project, which is externally moderated
- **Performance Contexts 1 (G402)** - in depth practical and theoretical study of Drama and Dance practitioners. This is an externally set and examined written paper. Currently the practitioners are John Godber and Lloyd Newson
- **Performance Contexts 2 (G403)** - students currently study Post Modern approaches to the Performing Arts since 1960 encompassing Drama, Dance and Music. This is assessed through a 2 hour externally set and examined written paper, although taught practically. Currently, students study Radiohead, The Beatles, Steve Reich, Matthew Bourne, Motionhouse, Lea Anderson, Caryl Churchill, Steven Berkoff and Ben Elton.
- **Performance Realisation (G404a)** – a final practical exam in a piece of repertoire in a particular artist's style and following one of their works, based on the areas studied in Contextual Studies 1 and 2 . Marked by a visiting examiner
- **Student Devised Performance (G404b)** - a final practical examination where students display their cumulative performance knowledge in Drama and Dance with Music as the linking art form (externally assessed).

YOU WILL LEARN TO:

- use appropriate practical skills in the three performance areas, specialising in Drama and Dance
- place the development of Dance, Drama and Music
- analyse and appreciate performance work of professionals, your peers and yourself
- evaluate workshop sessions, performances and the process of creating performance
- understand the nature and demands of performing to a targeted group
- use appropriate styles and forms to communicate and interact with an audience.

WHAT IS SPECIAL ABOUT THIS SUBJECT:

The AS/A-Level Performance Studies course is concerned primarily with performance in action. It combines the many aspects of the Performing Arts focusing on integrating them and creating strong performances. Taught by experts and supported by professionals from the performance world you will have the chance to produce excellent standards of performance work.

The unique aspect of this course is that there is much room within it to specialise and work within particular areas, styles and works that suit you best as a performer. As such, core 'texts' change frequently making the course individualised.

Through the work with professionals, asking you to participate in workshops, trips and visits and training you in technical and theoretical aspects, we try to make sure that your performance education is as wide ranging and diverse as the students who join the course.

PHYSICAL EDUCATION

Examination board: OCR

AS and A Level

TO TAKE THIS COURSE YOU NEED:

A minimum of five grade C or higher GCSE passes.

A grade C or above in short or full course GCSE in Physical Education, or a grade C or above in combined Science or Biology GCSE.

You would choose this course alongside 3 other AS-Level courses.

The OCR AS and A Level Physical Education specifications take a multi-disciplinary approach, encouraging the development of different methods of enquiry drawn from a wide range of disciplines, with the focal point being the performer and the performance. The specifications are based on the interaction between the theory and practice of Physical Education.

UNITS OF ASSESSMENT

Unit 1:

An Introduction to Physical Education

This includes: Applied Anatomy & Physiology; Acquiring Movement Skills and Socio-Cultural Studies.

Unit 2:

Practical assessment in two sports and an Oral involving evaluating and planning for improved performance (EPIP)

Unit 3:

Principles and Concepts across different areas of Physical Education

This includes: Historical Studies; Sports Psychology and Exercise and Sport Physiology.

Unit 4:

Practical assessment in 1 Sport and Synoptic Oral assessment

AS Level involves Units 1 and 2.

A Level involves Units 1, 2, 3 and 4.

EXAMINATION PROCEDURE

Unit 1: Written paper (2 hours)

Unit 2: Practical assessment and Oral EPIP

Unit 3: Written paper (2 ½ hours)

Unit 4: Practical assessment and Synoptic Oral

This course is divided 30% Practical and 70% Theory for AS and 20% practical and 80% Theory for A2.

IN ORDER TO SUCCEED YOU WILL NEED:

- An interest in a number of sports
- An aptitude for theoretical learning
- To realise that sporting ability alone will not gain you a pass in this subject without the understanding of theory work to back it up.

WHAT IS SPECIAL ABOUT THIS SUBJECT?

During the course you will gain an insight into the human body. This will include understanding about our physical capabilities, discovering how we learn new skills, and how environmental factors affect us. We will trace sports from their origin, through to present day issues that affect them. You will also have the opportunity to carry on your practical PE lessons, with you taking a more active role in their structure.

An A Level in Physical Education provides an excellent foundation for those wishing to study at further or higher education establishments. In particular, the course links well with Sports Science, Recreation and Teaching Physical Education.

PHYSICS

Examination Board: OCR

AS and A Level course

TO TAKE THIS COURSE YOU NEED:

Grade C or above in Mathematics GCSE and also grade C or above in Core **and** Additional Science or Physics GCSE at the higher level. GCSE Core Science on its own is not sufficient. You would choose this course alongside 3 other AS-Level courses.

The Advanced Subsidiary (AS) is assessed at a standard between GCSE and A Level and can be taken as a stand-alone specification or as the first part of the full A Level course. Assessment is by means of 3 units for AS and 6 units for A Level.

UNITS OF ASSESSMENT:

Unit G481 - **AS Mechanics** 1 hour (AS 30%, A 15%)

Unit G482 - **AS Electrons, Waves and Photons** 1 hour 45 min (AS 50%, A 25%)

Unit G483 - **AS Practical Skills in Physics 1** Internal Assessment (AS 20%, A 10%)

Unit G484 - **A2 Newtonian World** 1 hour (A 15%)

Unit G485 - **A2 Fields, Particles and Frontiers of Physics** 1 hour 45 min (A 25%)

Unit G486 - **A2 Practical Skills in Physics 2** Internal Assessment (A 10%)

This is a new course specification and structure.

All units are mandatory.

EXAMINATION DATES:

G481: January 2010, other AS units Summer 2009.

G484: January 2011, other A2 units Summer 2010.

IN ORDER TO SUCCEED, YOU WILL NEED:

- interest in Physics and general science and technology matters
- initiative, industry and objectivity
- concern for accuracy and precision
- mathematical and experimental skills.

YOU WILL STUDY:

The course builds on Physics knowledge gained up to GCSE. This includes a study of measuring techniques, motion, forces and energy, waves, current electricity, electromagnetic phenomena, electronics, structure and behaviour of matter, thermal physics, atomic structure and radio-activity. Practical skills are assessed internally. It is likely that the suggested tasks will be very similar to those previously taken in the form of a practical examination.

YOU WILL LEARN TO:

- understand and explain the physical world around us
- recognise the usefulness and limitations of science
- develop efficient and safe practice and effective communication skills.

WHAT IS SPECIAL ABOUT THIS SUBJECT?

Students gain a worthwhile education in experimental and practical science which allows them to become informed citizens in a technological world. In addition, the course provides suitable preparation for studies beyond A Level in Engineering, Medicine or in other Physics-dependent vocational courses.

PSYCHOLOGY

Examination Board: AQA (A)

TO TAKE THIS COURSE YOU NEED:

A grade C or above in English, Maths and Science and an interest in why people behave as they do!

SCHEME OF ASSESSMENT:

The course is assessed by examination. There are two examinations for the AS level, each one is 1 hour 30 minutes. Students take one module in January and one in May.

A2 psychology is assessed in two examinations, one taken in January (1 hour 30 minutes) and the other in June (2 hours).

There is no coursework component in psychology.

IN ORDER TO SUCCEED, YOU WILL NEED:

- To develop a mature attitude. We cover some sensitive topics in psychology including mental illness
- To be prepared to work hard to develop your skills. Psychology is not an easy option (it is a science degree at University) and includes some statistics, biology and the ability to write critically evaluative essays using research evidence to develop your argument
- To have an interest in, and a desire to understand, human behaviour

At AS you will study:

- Cognitive psychology - short and long term memory, forgetting, the reliability of eyewitness testimony, strategies for improving your memory
- Developmental psychology - the formation of attachments, deprivation and privation, the effects of day care

- Research methods and design - designing, running and analysing research
- Physiological psychology - bodily responses to stress including illness, sources of stress including life events/ hassles/workplace stressors and personality, stress management techniques
- Individual differences - definitions of abnormality, explanations of abnormality, treating abnormalities
- Social psychology - Conformity and explanations of why people conform, obedience and independent behaviour, implications of social influence research for social change

At A2 you will study:

- a psychological disorder in more detail (either schizophrenia, depression or anxiety disorders). This includes clinical characteristics, biological and psychological explanations and therapies
- aggression including psychological and biological explanations, evolutionary explanations including jealousy and lynch mobs
- eating disorders including factors influencing attitudes to food, dieting and biological and psychological explanations of one eating disorder
- addiction including biological and psychological models of addiction, specific addictions, vulnerability and types of intervention
- relationships including the formation, maintenance and breakdown of relationships, human reproductive behaviour and the effects of early experience and culture on adult relationships

YOU WILL LEARN TO:

- Use evidence to support an explanation of behaviour

- Analyse and critically evaluate theories and studies
- Design, run and analyse scientific investigations into human behaviour

WHAT IS SPECIAL ABOUT THIS SUBJECT?

- We all like to speculate about why people behave as they do and to find reasons for people's behaviour. Psychology does this in a scientific way.
- Psychology is a well respected academic A level – it is not viewed as an easy option by Universities and is seen as a useful subject for a wide range of degrees. Past students have gone on to study law, medicine, nursing, forensics, criminal psychology, policing, art, drama, history, teaching and many others (as well as psychology of course).
- Psychology links well with any other subject
- Psychology is one of the most popular and successful courses
- It's fascinating!

RELIGIOUS STUDIES

Examination Board: AQA

AS and A Level

TO TAKE THIS COURSE YOU NEED:

A minimum of five grade C or higher GCSE passes including English and either Short Course or Full Course Religious Studies

ASSESSMENT AT AS LEVEL

AS -There are two modules - examined in May/June. There is no coursework component.

A2 - There are 2 modules - examined in May/ June. There is no coursework component.

THERE WILL BE TWO COURSES OFFERED:

BUDDHISM AND PHILOSOPHY

AS

Unit 1 - *World Religions 1 - Buddhism*

Unit 1C - *Philosophy*

A2

Unit 3G - *World Religions 1- Buddhism*

Unit 4A - *Life Death and Beyond*

ETHICS AND PHILOSOPHY

AS

Unit 1A - *Ethics*

Unit 1D - *Philosophy*

A2

Unit 3B - *Philosophy of Religion*

Unit 4C - *Ways of Moral Decision-Making*

COURSE 1 - BUDDHISM AND PHILOSOPHY

AS LEVEL

UNIT 1 BUDDHIST

Four topics are identified for study and there will be one question based on each topic. Candidates must answer 2 questions.

- Samsara and The Three Marks of Existence - issues arising e.g. 'Is the Buddhist attitude to life negative and pessimistic?'
- The Four Noble Truths - issues arising e.g. 'If the end of dukkha is achieved by the end of desire, should Buddhists desire to end desire?'
- The Eightfold Path - issues arising e.g. 'Is any one of the three elements of the Eightfold Path - wisdom, morality and

meditation - more important than the others?'

- The Sangha - issues arising e.g. 'Is the way of the monk harder and better than the way of the lay Buddhist?'

UNIT 1C - PHILOSOPHY

Four topics are identified for study and there will be one question based on each topic. Candidates must answer two questions.

- Cosmological argument - issues arising e.g. 'How far does the cosmological argument prove that God exists or show it is reasonable to believe in God?'
- Religious experience - issues arising e.g. 'Can religious experience show that God probably exists?'
- Psychology and religion - issues arising e.g. 'Has 'God' been explained away by psychology?'
- Atheism and postmodernism - issues arising e.g. 'Is religion in retreat in the modern world?'

A2 LEVEL

UNIT 3G - WORLD RELIGIONS 1 - BUDDHISM

Four topics are identified for study and there will be one question based on each topic. Candidates must answer two questions.

- Themes in Mahayana Buddhism - issues arising e.g. 'Is Pure Land Buddhism the 'easy' path of Buddhism in which 'self effort' plays no part?'
- Aspects of Buddhist Philosophy - issues arising e.g. 'What value, if any, have these ideas for Buddhists?'
- Meditation - issues arising e.g. 'Are these practices an escapist attempt not to face up to reality?'
- Buddhist ethics - issues arising e.g. 'Which is most important in Buddhism, the motive behind an action or the consequences of that action?'

UNIT 4A - LIFE DEATH AND BEYOND

Four topics are identified for study and there will be one questions based on each topic. Candidates must answer two questions

- Religious and secular perspectives on the nature and value of human life
- Eschatological and apocalyptic, religious and secular teaching and attitudes
- Religious and secular ideas about the importance of the present life and life after death
- Beliefs about death and beyond, both religious and non-religious

COURSE 2 - ETHICS AND PHILOSOPHY

AS LEVEL

UNIT 1A ETHICS

- Utilitarianism - issues arising e.g. 'How practical is Utilitarianism?'
- Situation Ethics - issues arising e.g. 'Is conscience a vital element of situation ethics?'
- Religious teaching on the nature and the value of human life - issues arising e.g. 'If humans are in God's image, can it ever be morally right for them to kill another human being?'
- Abortion and euthanasia - issues arising e.g. 'Does the definition of human life stop abortion being murder?'

UNIT 1D PHILOSOPHY

- Miracles - issues arising e.g. 'If miracles happen, do they make it reasonable to believe that God exists?'
- Creation - issues arising e.g. 'Is intelligent design a scientific theory or a religious one?'
- The Design Argument - Issues arising e.g. 'How far does the argument make it reasonable to believe in God?'

- Quantum mechanics and a religious world view - issues arising e.g. 'has science 'discovered' something that mystics knew all along?'

A2 LEVEL

UNIT 3B PHILOSOPHY OF RELIGION

- Ontological argument and the relationship between reason and faith - issues arising e.g. 'How successful is this argument as proof of God's existence?'
- Religious Language - issues arising e.g. 'Is it possible to talk meaningfully about God?'
- Body, Soul and Personal Identity - issues arising e.g. 'Do near death experiences provide reasonable grounds for belief in the after life?'
- The Problem of Evil - issues arising e.g. 'Is free will a satisfactory explanation for the existence of evil in a world created by God?'

UNIT 4C WAYS OF MORAL DECISION MAKING

There will be two questions based on the topic. Candidates must answer one question. Candidates will be expected to understand and apply the approaches religion(s) and ethicists take to moral decision-making. They can select from **one** of the following

- Medical research and medical developments
- War and peace
- Business practice and economics
- Human behaviour

For more details of these units students are encouraged to visit the AQA website.

SOCIOLOGY

Examination Board: AQA

Syllabus: **AS** 1191, **A2** 2191

TO TAKE THIS COURSE YOU NEED:

A minimum of five grade C or higher GCSE passes, including English. You would choose this course alongside 3 other AS-Level courses.

The following pattern of assessment leads to the AS qualification. There is a further pattern of assessment leading to A2.

AS + A2 = A Level.

ASSESSMENT AT AS LEVEL:

There are three assessment units as follows:

Unit 1 *AS Module 1 - **Culture and Identity; Families and Households; Wealth, Poverty and Welfare***

Unit 2 *AS Module 2 - **Education; Health; Sociological Methods***

ASSESSMENT METHOD:

Unit 1 - Written Examination. 1 hour. 40% of total marks.

Students will choose one topic from three and answer one question which will be divided into five parts.

Unit 2 - Written Examination. 2 Hours. 60% of total marks

- Students will choose one topic (Education or Health) and answer a four part question on this topic
- Students will answer one question on sociological research methods that relates to their chosen topic (Education or Health)
- Students will answer a four part question on sociological research methods in general.

IN ORDER TO SUCCEED YOU WILL NEED:

- an enquiring mind with an interest in topical issues. You will need to be prepared to challenge commonly held assumptions about how our society is organised and functions.
- the ability to think logically and the capacity to handle new ideas and concepts.
- to be prepared to use a range of sources - textbooks, the mass media, Internet etc. - to develop your understanding of a topic.
- the ability to write clearly in essay or extended answer formats.
- to enjoy investigating aspects of society in a systematic and scientific way.
- to actively participate in class discussions and debate

YOU WILL STUDY:

- contemporary societies and the way in which they work (there is an emphasis on Britain).
- you will examine key topics such as changes in the family and education , the social aspects of health, how the mass media operate, the meaning of work and leisure and the extremes of wealth an poverty.

A TYPICAL PATTERN OF STUDY:

AS UNIT ONE

There is an introductory unit called *What is Sociology?* In which the following is covered:

- The sociological approach
- Key concepts including: culture, norms, values, status, socialisation, social role and social control
- An introduction to the core themes in the syllabus: socialisation, culture and identity; social differentiation, power and stratification.

Students will then study one topic from the syllabus in detail.

In 2008/9 the chosen topic is culture and identity

Students will be expected to take an examination in this unit in January 2010. This exam is worth 40% of the total marks for AS

CULTURE AND IDENTITY

Students will learn about:

The socialisation process and the role of the agencies of socialisation. Including:

- Primary socialisation (how young children learn basic behaviour; secondary socialisation; wild or feral children).
- The nature/nurture debate; socio-biology
- Socialisation as a process through life (for example, living in different cultures or institutions).
- Agencies of socialisation (including family, pre-school carers, school, peer group, media and religious organizations).

Different Conceptions of Culture

- Alternative definitions/explanations of culture. Culture as the link between the individual and society
- Cultural differences (including styles of dress; feeding behaviour; punishment and rewards etc)
- Subcultures. This would include: social class subculture; youth subcultures and style; deviant or criminal subculture; subcultures as resistance
- Mass culture or popular culture. High and folk culture. Low culture. The culture of masses and the dumbing down debate.
- Global culture including an understanding of globalisation and post modernity

Different ideas about the self, identity and difference

- Identity and personality
- Symbols of identity
- Key authors: Mead, Freud and Goffman

The relationship of identity to age, disability, ethnicity, gender, nationality, sexuality and social class.

- Social approval and identity. Use of names. Stigmatisation. Media representation (for example, how different groups may be shown in broadcast media).
- How identities are constructed
- How identity is linked to social inequality
- Cultural variation and identity

Leisure, consumption and identity

- The relationship between leisure and work
- Leisure and its relationship to gender and social class
- Leisure and post modernity: for example, tourism, theme parks, museums etc.
- Changing the self e.g. plastic surgery.

AN ALTERNATIVE TOPIC FOR STUDY

Families and Households

Students will examine:

- Changing patterns of marriage, cohabitation, separation, divorce and childbearing and the wide range of different forms of family and household that exist in modern society
- Changes within the family due to shifts in gender roles, ideas about who does what in the home, power relationships between men and women and changes in the status of children and childhood.
- How the family relates to the broader social system with particular reference to the economy and social policies

- Demographic changes in the UK since 1900 including birth rates, death rates and the size of families
- The meaning of childhood and how it has changed with time. The rights and responsibilities of children today. The legal position of children

(The other topic in unit 1 is Wealth, Poverty and Welfare)

AS UNIT TWO

This unit combines research methods and another topic for study

The choice of topic may be influenced by the interests of the group

The examination will be taken in June 2010 and is worth 60% of the marks for AS

For Example:

Education

Students will examine:

- different explanations for the role of the education system
- explanations for why there is different educational achievement among social groups in society according to their social class, gender and ethnicity
- the meaning of teacher/pupil relationships, student subcultures, the hidden curriculum and how teaching and learning are organised
- how state policies affect the role, impact and experience of education

The other possible topic is *Health*

Sociological methods

Students will examine:

- different methods for collecting information including questionnaires, interviews, observation techniques and experiments and also the use of documents and official statistics

- the distinctions between primary and secondary data, and between quantitative (number type) data and qualitative (conversations, written statements, diary etc. type) data
- positivist (being scientific) and interpretivist (non-scientific) ways of doing sociological research
- the theoretical, practical and ethical considerations influencing the choice of topic and methods and how the research is carried out
- the meaning of social facts and the strengths and limitations of different ways of collecting information.

A2 TOPICS

Unit 3 - These include: power and politics, beliefs in society, global development; the mass media

Unit 4 - These include: crime and deviance; social class, race and other differences between people

WHAT IS SPECIAL ABOUT THIS SUBJECT?

- Sociology has been described as the scientific study of society and its subject matter has an influence on everyone. It is a very popular AS Level and Higher Education subject largely due to its relevance to people's lives. It also provides an alternative to more traditional subjects in the curriculum
- It is accepted by all the major universities as a qualification for a large range of courses. It can be studied at university in combination with a huge variety of subjects
- It develops a range of skills including research methods, evaluation, logical thought, analysis and report writing
- It provides insights into society and the wider world that help students when they attend interviews or have to write personal statements about themselves and their attitudes and beliefs

- Sociology works well as a combination with psychology where it is possible to make links in the subject matter as well as in research methods and topics for research

The subject matter of sociology is a component in the training and preparation for many careers including:

- Media and journalism
- Nursing and health studies
- Business
- Public relations and marketing
- Retail and advertising studies
- Criminology and the law
- Education and teaching
- Officer training in the armed forces
- Probation service
- Social work

TEXTILES - (ART AND DESIGN)

Examination Board: AQA

TO TAKE THIS COURSE YOU NEED:

GCSE grade C or above in Design and Technology or Art and Design

SCHEME OF ASSESSMENT:

AS

Unit 1 - This is a personal exploration into a topic with a final piece outcome. It is worth 50%

Unit 2 - This unit is about development of ideas. You will choose a topic that has been written by the exam board and have 3 months to prepare through research and development for this controlled test. The test will be under exam conditions and will last for 5 hours. It is worth 50%.

A2

Unit 3 - Is a personal exploration into a topic

with a written element of 1000 - 3000 words alongside a final piece outcome. This is worth 25%

Unit 4 - worth 25%

This unit is about development of ideas. You will choose a topic that has been written by the exam board and have 3 months to prepare through research and development for this controlled test. The test will be under exam conditions and will last for 15 hours

AS units will be worth 25% at A2

IN ORDER TO SUCCEED, YOU WILL NEED:

to be creative, adaptable, willing to try new techniques and explore new ideas. You will need a passion for textiles, whether it is in fashion, surface pattern or furnishings.

YOU WILL STUDY:

a range of printing, construction and manipulative, machine/hand embroidery techniques. Through focusing on a range of textiles, artists and designers you will learn how to design and develop your ideas to make a final product.

YOU WILL LEARN TO:

use your knowledge and understanding of the subject to bring together your designs. You will analyse and evaluate your work and others. You will learn to make your designs a reality by being able to use a variety of techniques to constructing garments, furnishings and sculptures.

WHAT IS SPECIAL ABOUT THIS SUBJECT?

This subject is a stepping stone to you pursuing a career in fashion, interiors, design and art. You will be able to join a Foundation Course in Art and Design which is the normal route to an art based university course or in some cases you can apply directly to universities specialising in Textiles.

BTEC NATIONAL DIPLOMA IN CHILDREN'S CARE , LEARNING AND DEVELOPMENT

Examination Board: Edexcel

This is a full time course.

TO TAKE THIS COURSE YOU NEED:

A minimum of four grade C or higher GCSE passes, and a minimum grade D in English. This is a full time course with the equivalence of 3 A Level qualifications.

This course focuses on the education and training for Children's Care, Learning and Development which, on successful completion, will gain you a nationally recognised vocationally specific qualification to enter employment (Qualified Practitioner Status for 0 -8 years).

ASSESSMENT:

All of the units of work are internally set by the teaching staff and externally verified by an outside examiner. Assessments are set on a half-termly basis.

IN ORDER TO SUCCEED, YOU WILL NEED:

- to be able to work independently and have good organisational skills in order to meet deadlines.
- a genuine interest in working with and learning about the care and development of children.

YOU WILL STUDY:

Eighteen units of work spread over two years, including Promoting Children's Development between 0 -16 years, Safe Guarding Children, Psychological Perspectives on Children's Behaviour, ICT for the early years practitioner and Positive Environments.

Professional Practices. This will involve you

in a number of work placements with children between the ages of 0 - 8 years. One day per week plus a number of block placements will be spent in a Primary School, a nursery unit, with children 0 -2 and with children who have special needs. You must spend a minimum of 800 hours on work experience over the 2 years.

WHAT IS SPECIAL ABOUT THIS SUBJECT?

A National Diploma is a highly regarded qualification. It is the equivalent of 3 A Levels and a practical qualification equivalent to NVQ3.

It is wide ranging, preparing students for a variety of good quality jobs including; work as an early years professional in the appropriate vocational sector for example; statutory and private nurseries, schools and private homes.

OR

Students who achieve consistently good marks could continue to degree or other Higher Education programmes which will enable them to progress into more specialised professions such as teaching or play therapy.

BIBLIOGRAPHY

There are many resources on Sixth Form decisions, choosing A levels, Higher Education and Degree courses to be found in the Careers Library. Entrance requirements of universities abroad are available from Careers staff. Qualifications for Careers in Europe are also available. The universities website www.ucas.com is a valuable resource.

Most of the books and resources below are available in the Careers Library and in the Sixth Form Centre.

A compendium of University Entrance Requirements for First Degree Courses in the United Kingdom

- CRAC Degree Course Guide Series
- Directory of First Degree Courses
- British Qualifications: Kogan Page
- Degree Course Offers
- Which Degree?
- Handbook of Degree and Advanced Courses
- A Guide to University Entrance
- Compendium of Advanced Courses in Colleges of Further Education and Higher Education.

There is a wealth of information on the worldwide web and you will find many of the above resources and much more by following the various links from the Sixth Form section of the college website on:

www.tavistockcollege.devon.sch.uk

THE COLLEGE LIBRARY

OPENING HOURS

Monday - Friday:

Open daily at 8:30

Closes Mon, Wed, Fri at 3:30

Tuesday and Thursday:

Headstart Study Club until 4:40

The College has a large, well stocked Library of 15,000 books, many of them recommended by Sixth Form teachers. To take out a book student accounts are recognised by biometric finger scan, books are bar-coded and staff issue books with a bar-code scanner. Students can take out five books for a 21 day loan and renew as necessary. The return date will be stamped in the front of the books. Students are issued with a pin number and password and can access their own library account, see what books they have out on loan, check the catalogue and reserve books.

The Library has computers for student use and there are daily newspapers, a wide range of magazines and periodicals for reference. With more syllabi demanding research that goes beyond internet reference only, the books and periodicals available are an invaluable resource. For example in the AS Level Applied ICT Syllabus it says, "To be eligible for Mark Bank 3 (high marks) learners must have found and used a wide range of resources to find relevant information without needing any prompting. (In this context, a wide range should be taken to mean at least five different types of sources, e.g. newspaper or magazine articles, textbooks, interviews, personal experience, broadcasts etc.)"

All new Sixth Form students will have a Library induction, be encouraged to use the Library and may even become Student Librarians if they wish.

A GLOSSARY OF TERMS

A-Level

Advanced Level courses consist of 4 or 6 units of work and are normally taken over two years.

AS-Level

Advanced Subsidiary is the first half of an A Level and consists of 2 or 3 units, normally completed in Year 12.

A2

the second half, a further 2 or 3 units, of the course leading to a full A Level.

Unit

each separate part of a qualification, usually with its own separate examination. These used to be known as modules. Some units are coursework based.

Level 2 Courses

are qualifications equivalent to GCSE grades A*-C. Our level 2 qualification is called the BTEC First Diploma.

Level 3 Courses

are qualifications equivalent to A Level and include AS Levels and the BTEC National Diploma.

BTEC First Diploma

is a full time course taking one year leading to a level 2 qualification worth 4 grades A*-C. It can be used as a progression route onto level 3 courses (merit or distinction is required).

BTEC National Diploma

is a full time course taking two years and equivalent to 3 A Level passes. We are offering one BTEC National Diploma in Children's Care, Learning and Development.

Awarding Bodies

were previously known as Examination Boards. There are three such bodies in England - Edexcel, AQA, OCR, and one Welsh body – WJEC.

Specifications

are published by awarding bodies to set out what is to be covered for each subject on offer. They are also known as syllabuses.

Grades

are awarded for A and AS courses at levels A* (at A Level only) A, B, C, D, E. and BTEC units are graded pass, merit and distinction.

SIXTH FORM COURSES

A list of the courses we hope to offer in Year 12 for September 2010

TWO YEAR ADVANCED COURSES (Level 3)

BTEC National Diploma in Children's Care, Learning and Development – full time course.

A-Levels which are offered as AS courses (2/3 units) followed by A2 courses (2/3 units) except where shown

Art	Film Studies	Further Mathematics
Art (Photography)	Food Technology	Media Studies
Biology	French	Music
Human Biology	Geography	Performance Studies
Business Studies	German	Physical Education
Business Studies Applied	History	Physics
Chemistry	Information Technology	Psychology
Computing	Italian	Religious Studies – Buddhism
Design & Technology – Product Design	Japanese	Religious Studies – Ethics and Philosophy
Electronics	Law	Sociology
English Language	Leisure Studies	Spanish
English Literature	Mathematics	Textiles – Art and Design

1 YEAR BTEC First Diplomas (Level 2)

Business
Health and Social Care

GCSE Retakes

In English, Mathematics, Science

A Conference for all those who think that they may be returning to the Sixth Form.

Make a note of your conference dates

5th - 7th July, 2010